

RTA REGIONAL
BUSINESS
LEADERSHIP



TRANSPORTATION BRUNCH 2025

In Concert with the I-40 Regional Partnership

August 8, 2025 | 9 - 11:30 a.m.
Westin Raleigh-Durham Airport

#RTABRUNCH25

08.08.2025



BRENNON FUQUA

Director of Integrated Mobility Division NCDOT

JENNIFER PORTANOVA

State Transportation System Manager & Operations
Engineer (I-40 Regional Partnership Executive, NCDOT)

@RALEIGHCHAMBER #RTABRUNCH25

NCDOT Integrated Mobility Division

FAST Transit



FAST transit is a scalable approach for quickly integrating “transit advantage” infrastructure along the roadway system to support enhanced transit service.

The “FAST” approach prioritizes transit efficiency and reliability while improving mobility for all users

Key Study Priorities

- Improve regional transit connectivity and coordination
- Explore BRT links to key destinations, like RDU Airport
- Identify priority corridors for transit-friendly infrastructure
- Recommend phased, practical investments
- Align highway and transit planning practices
- Leverage partnerships with MPOs and transit agencies to further coordination

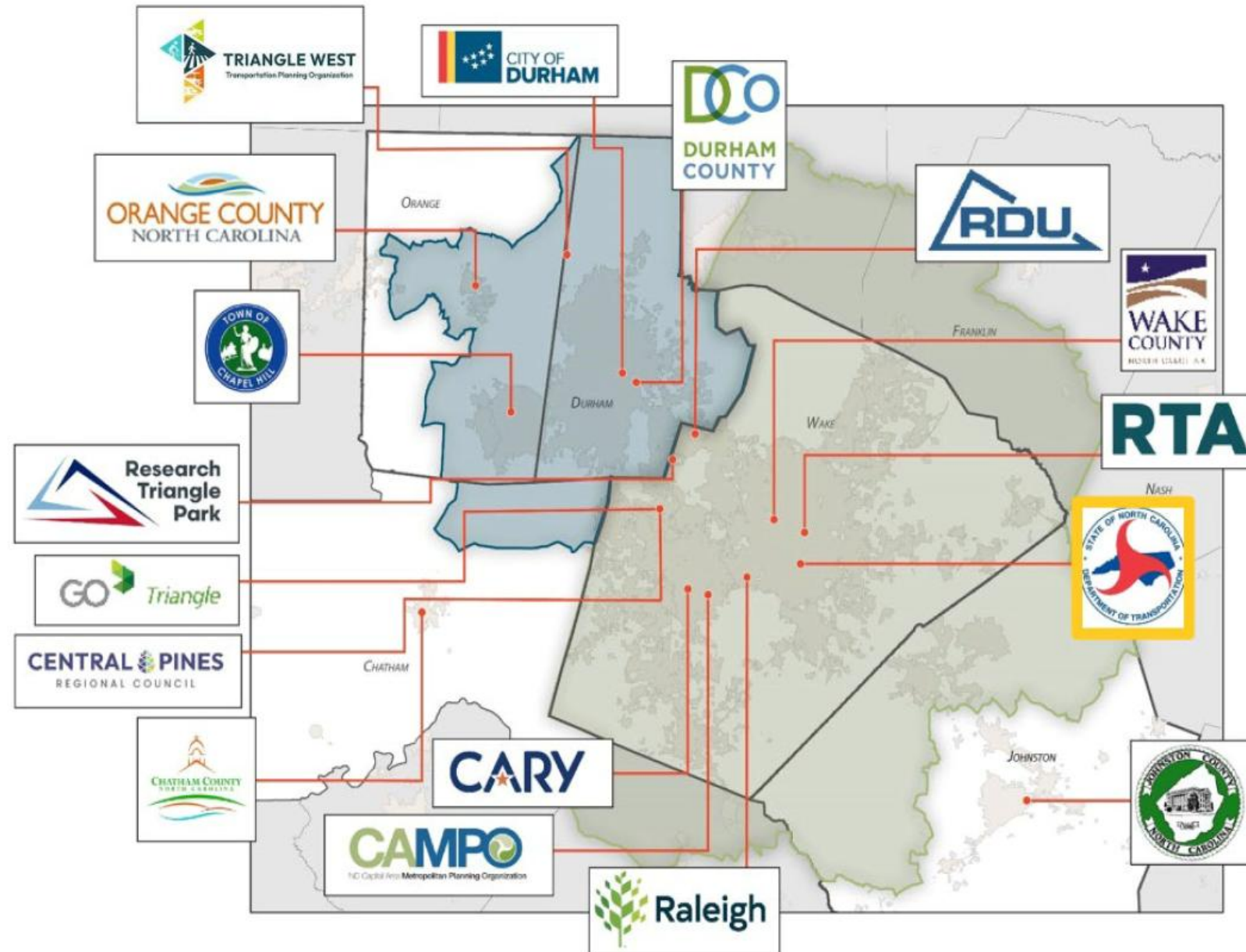
Stakeholders

NCDOT Units

- Highway Divisions 4, 5, 7, 8
- Transportation Mobility & Safety
- Roadway Design Unit
- Integrated Mobility Division

NCDOT Roles

- Facilitating complete streets design
- Evaluating project feasibility
- Supporting project implementation

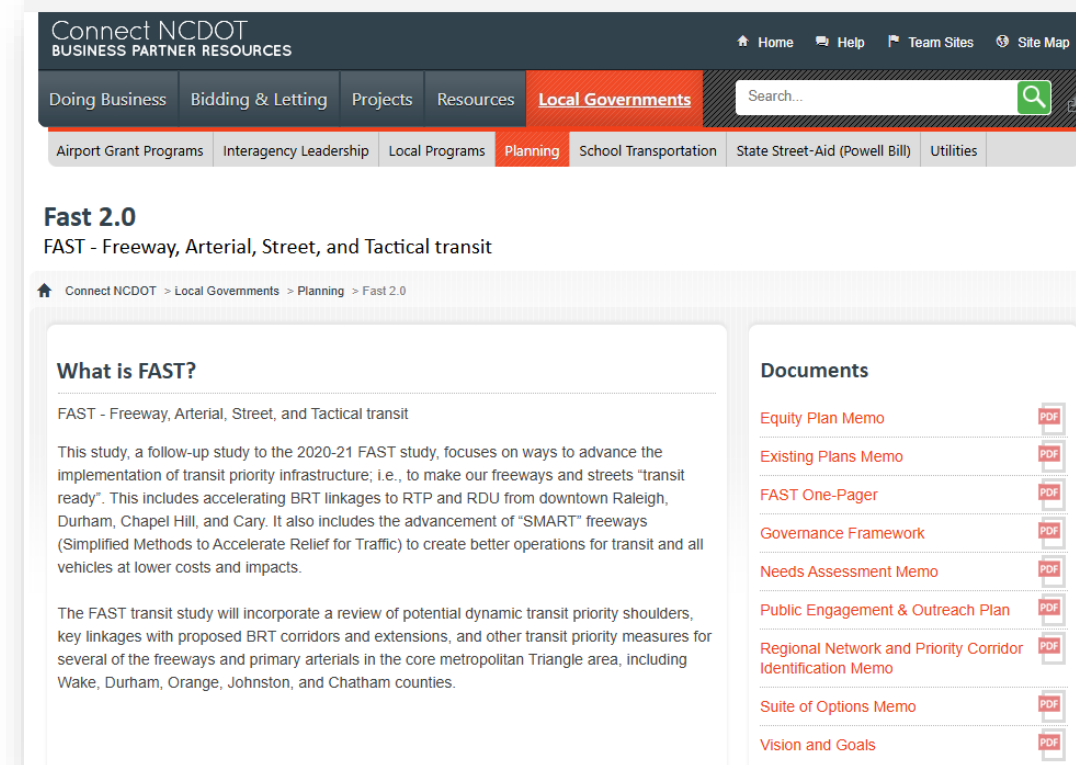


Next Steps Toward Implementation

- **Integrate & Advance Key Projects**
 - Incorporate priority projects into local plans
 - Advance projects identified in local & regional studies
 - Align with ongoing transit studies (*CHT, Durham BRT, Regional Blueprint*)
- **Coordinate & Collaborate**
 - Continue regional coordination
 - Strengthen funding and grant strategy
- **Update Design & Planning Tools**
 - Continue evaluation of incorporating transit into roadway infrastructure projects
 - Advance BRT design updates
 - Prioritize corridors for future major investment studies

Communicating Outcomes

- **Digital Distribution**
 - Final deliverables posted to project website
 - Coordination with NCDOT Comms to amplify content via social media
- **Ongoing Stakeholder Engagement**
 - FAST Steering Committee to continue serving as hub for regional coordination and updates
- **Statewide Implications**
 - Explore future opportunities for webinars, MPO presentations, implementation toolkits, etc.





MORVEN MACLEAN

Project Manager, WSP

GREG SAUR

FAST 2.0 Transit Study Project Manager, WSP

@RALEIGHCHAMBER #RTABRUNCH25

RTA 2025 Transportation Brunch

FAST_{2.0}
Freeway, Arterial, Street, and Tactical Transit

Morven MacLean

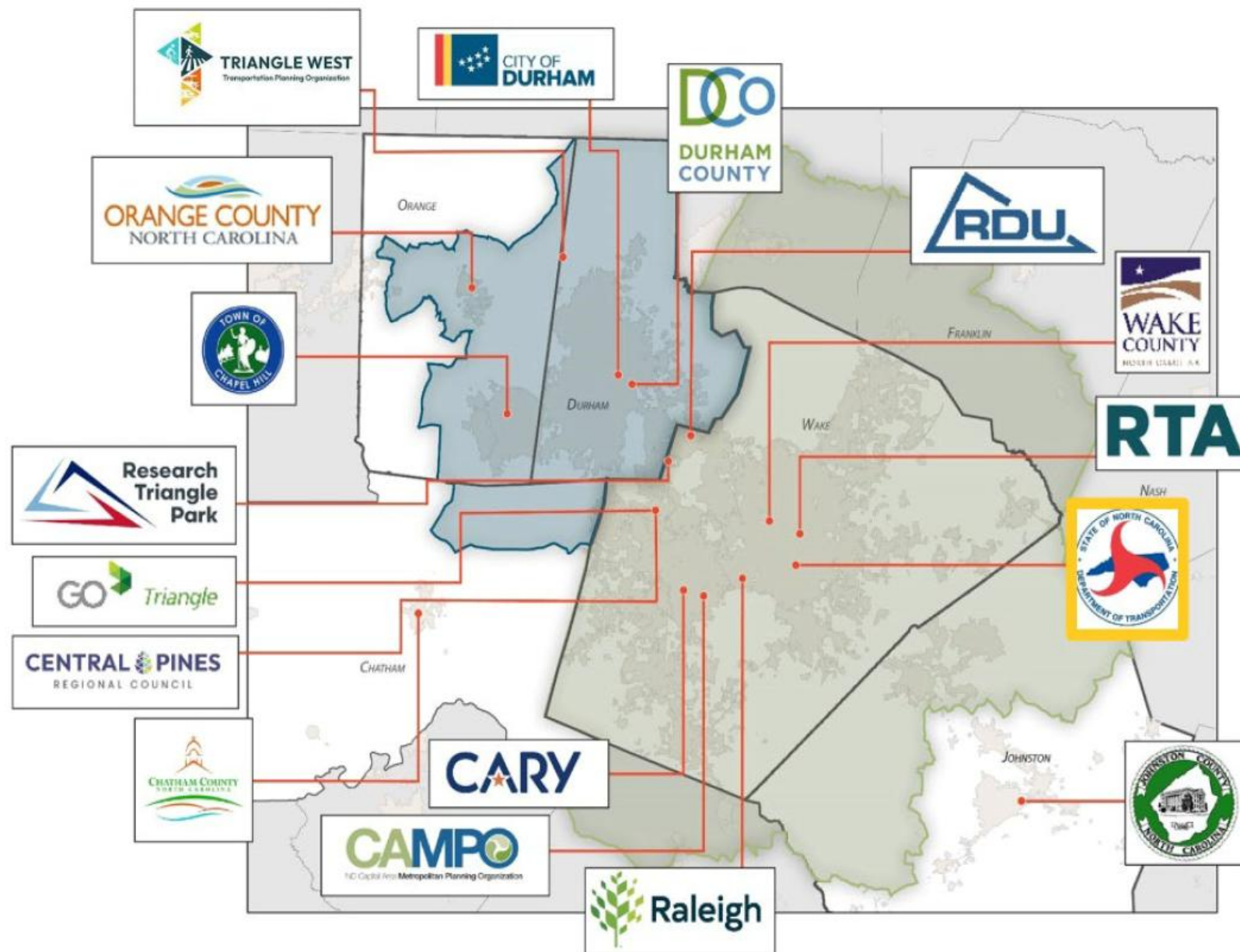
WSP

Rachel Gaylord-Miles

WSP

Stakeholders

- NCDOT Units
 - Division 4, 5, 7, 8
 - Mobility & Safety
 - Roadway Design
 - Integrated Mobility Division



FAST Transit

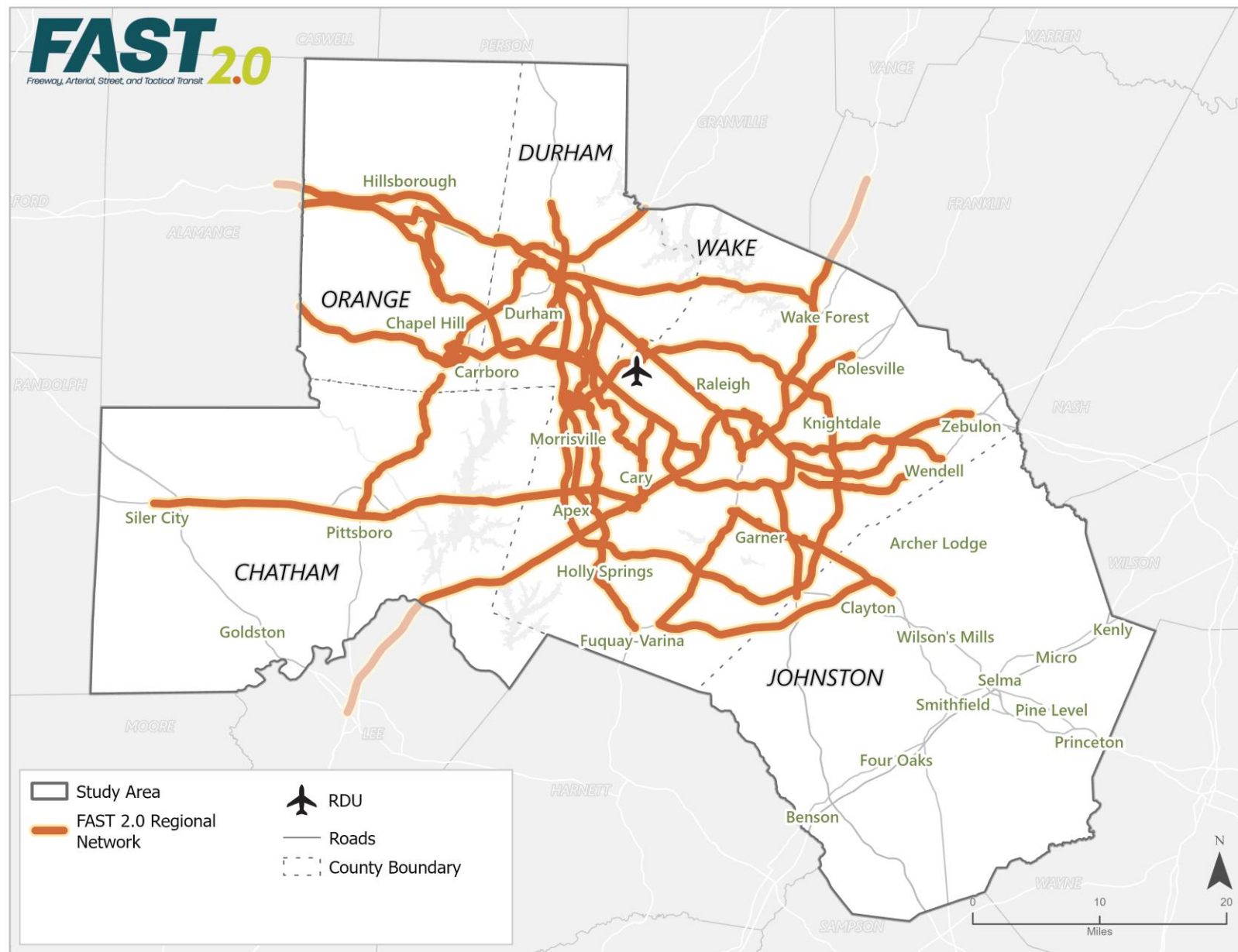


FAST transit is a scalable approach for quickly integrating “transit advantage” infrastructure along the roadway system to support enhanced transit service.

Regional Network & Priority Corridors

Regional Network

Roadways that have potential for long-term transit priority investment.



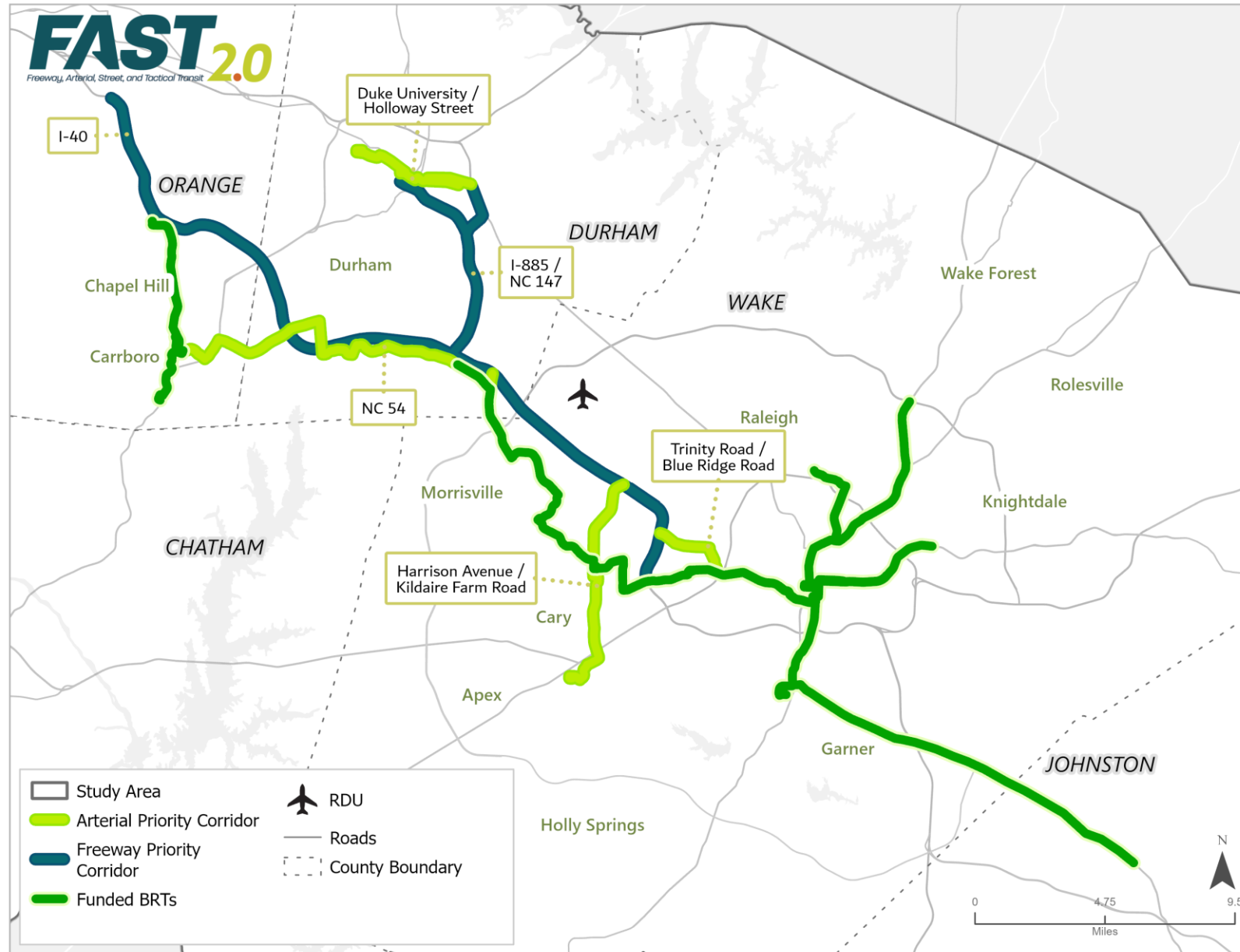
Priority Corridors

Freeway

- I-40
- I-885 / NC 147

Arterials

- Duke University/Holloway Street
- Trinity Road/Blue Ridge Road
- Harrison Avenue/Kildaire Farm Road
- NC 54



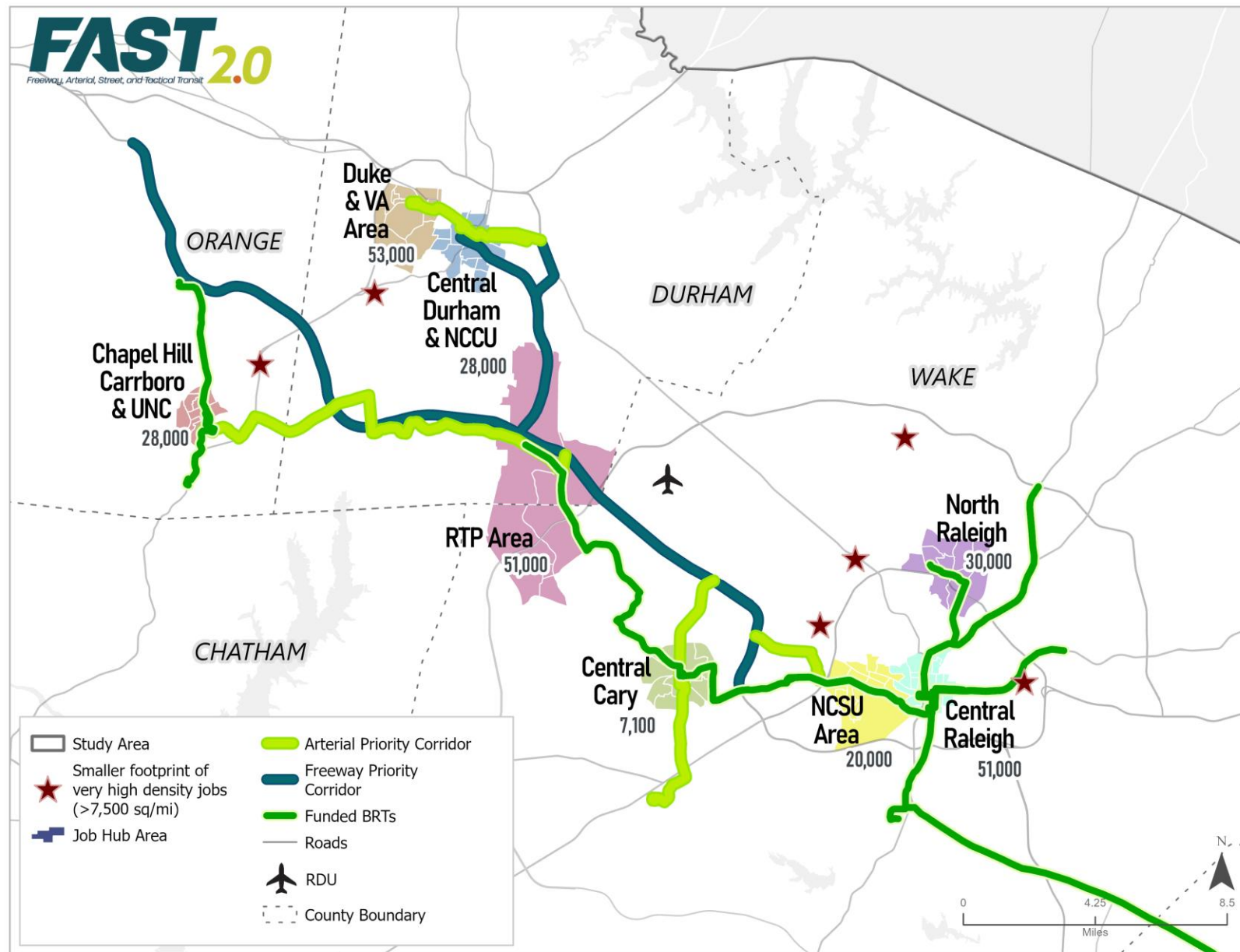
Employment

Freeway

- I-40
- I-885 / NC 147

Arterials

- Duke University/Holloway Street
- Trinity Road/Blue Ridge Road
- Harrison Avenue/Kildaire Farm Road
- NC 54



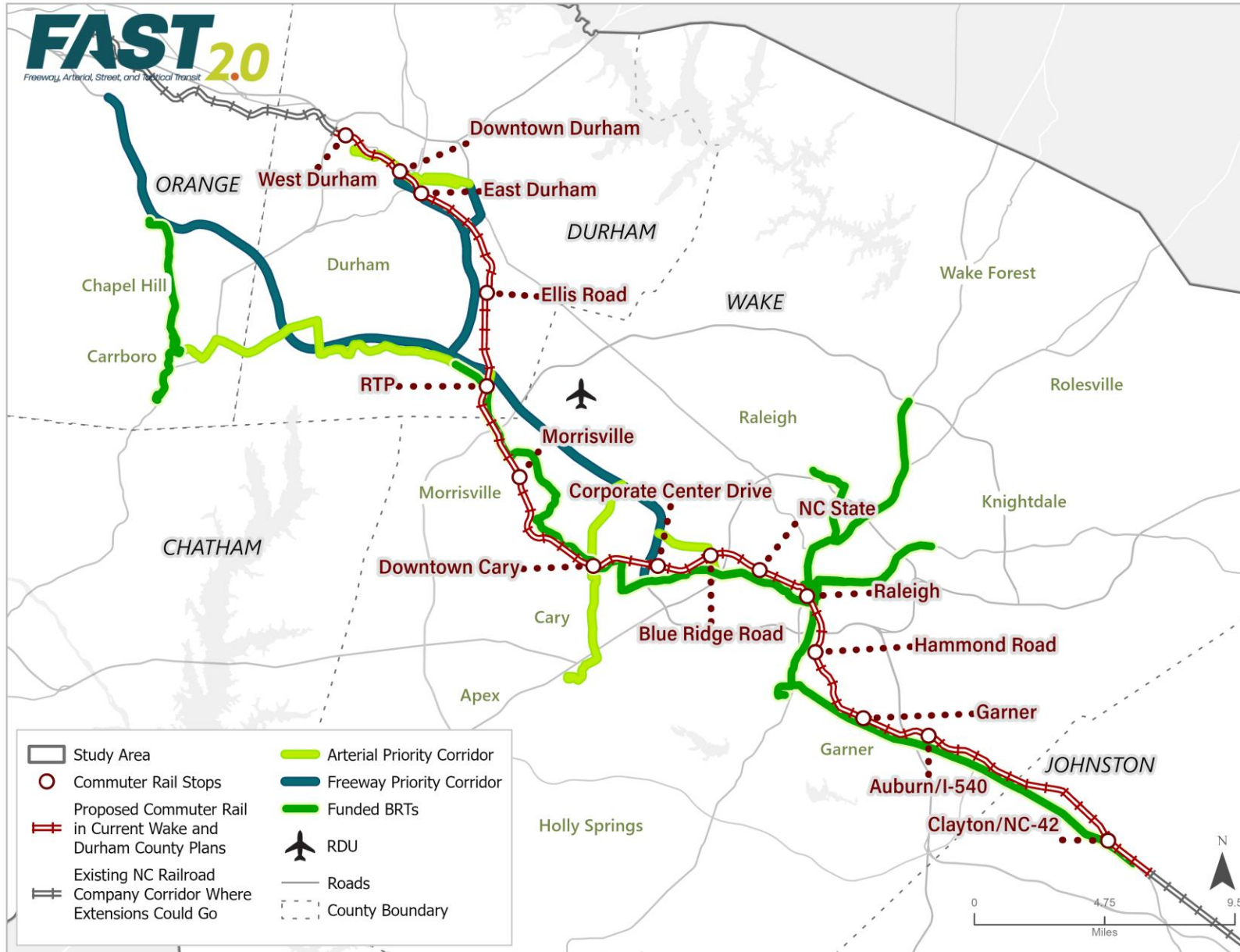
Commuter Rail

Freeway

- I-40
- I-885 / NC 147

Arterials

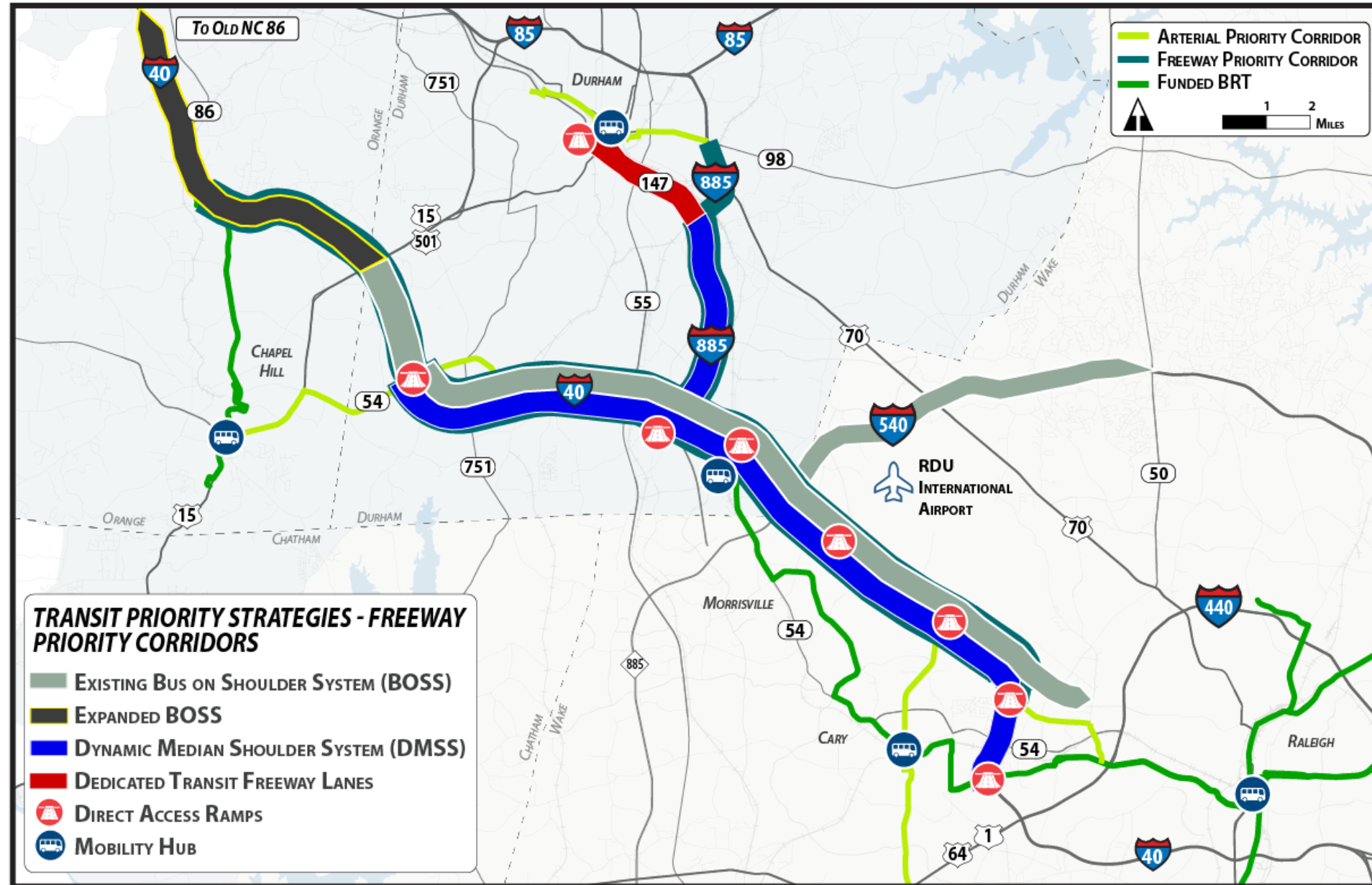
- Duke University/Holloway Street
- Trinity Road/Blue Ridge Road
- Harrison Avenue/Kildaire Farm Road
- NC 54





Freeway Concepts

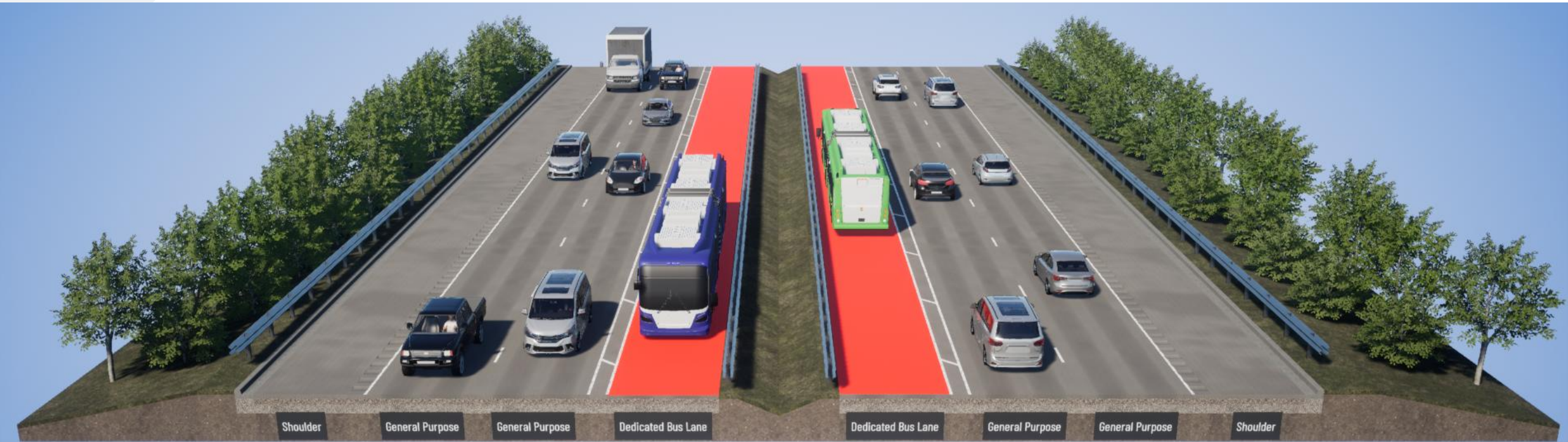
Freeway Concepts



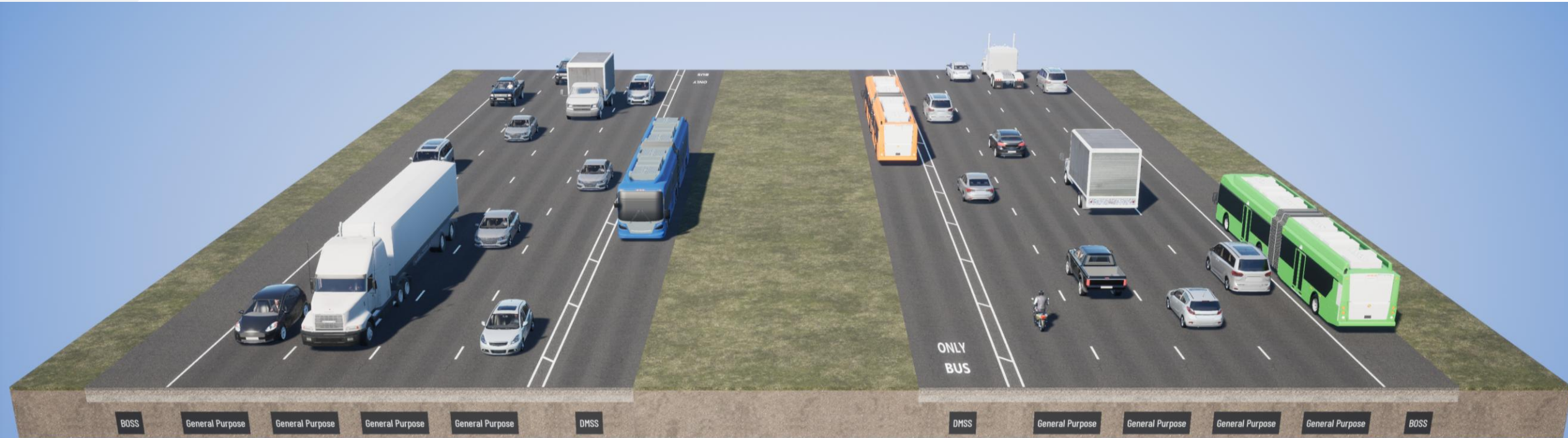
Bus on Shoulder System (BOSS): I-40



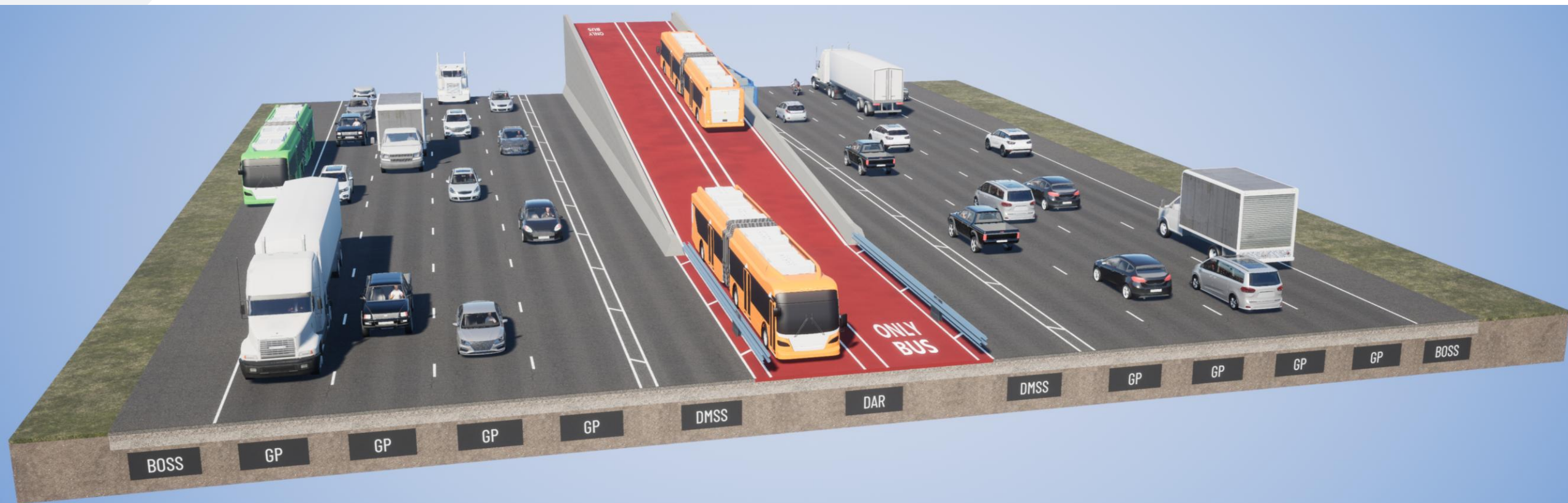
Dedicated Transit Lanes: NC 147



Dynamic Median Shoulder System (DMSS)



Direct Access Ramp between BRT and Freeway





Arterial Concepts

West Raleigh Arterial Concept:

- Trinity Rd / Blue Ridge Rd
- I-40 Direct Access Ramp
- Lenovo Center
- Carter-Finley Stadium
- NC State Fairgrounds
- NC State Vet School



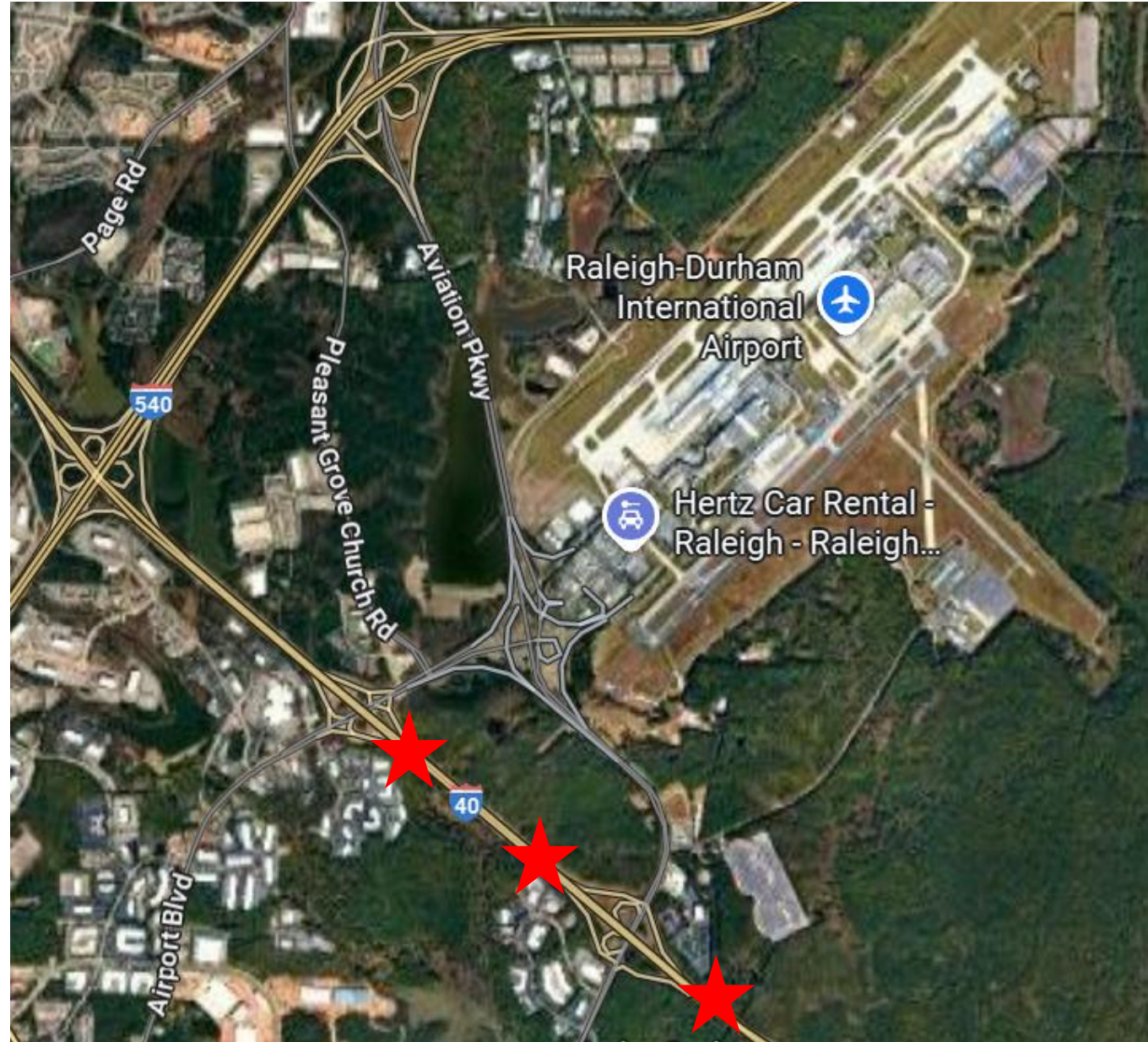
RED Transit Priority Lanes: Blue Ridge Rd



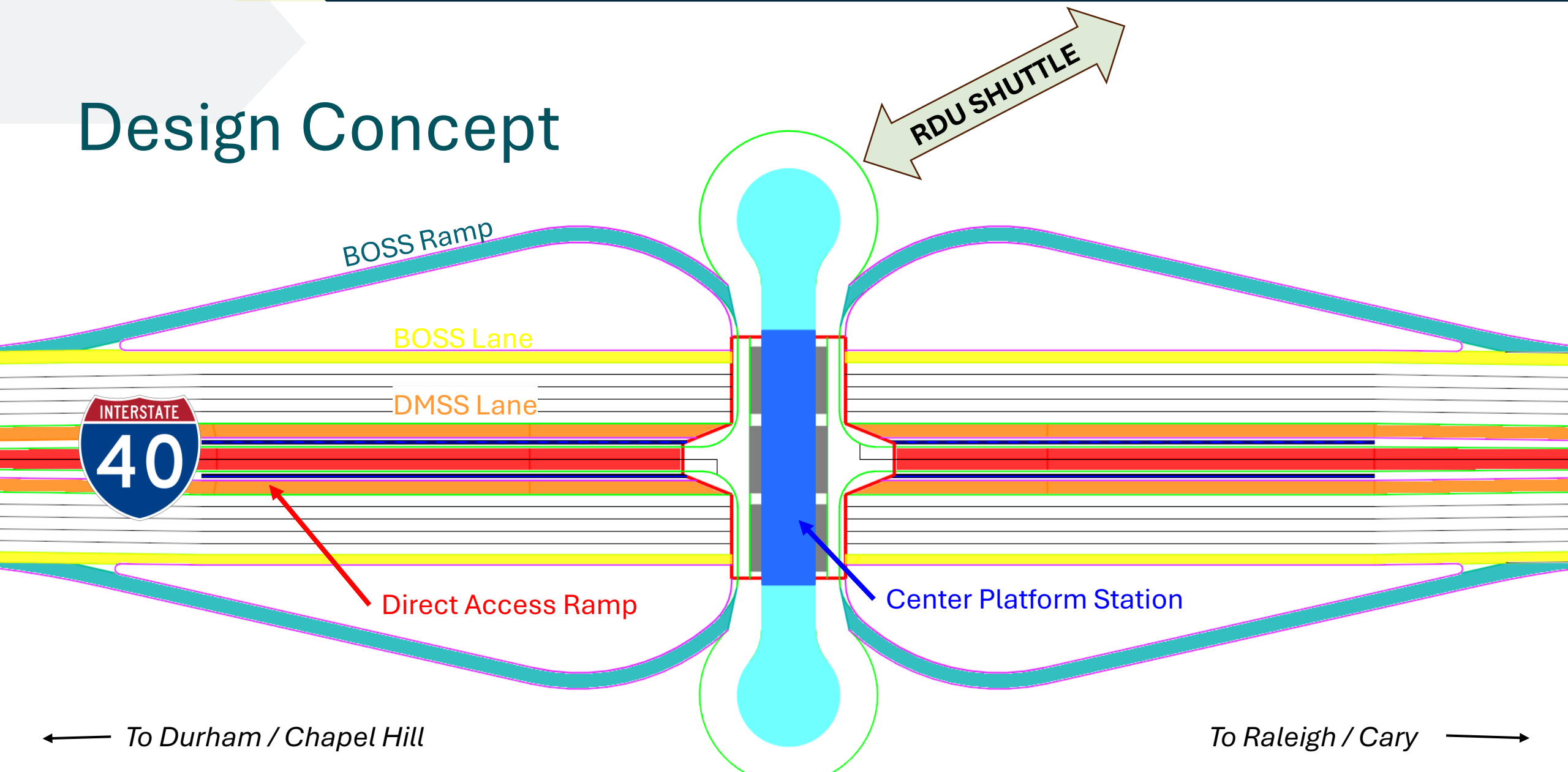


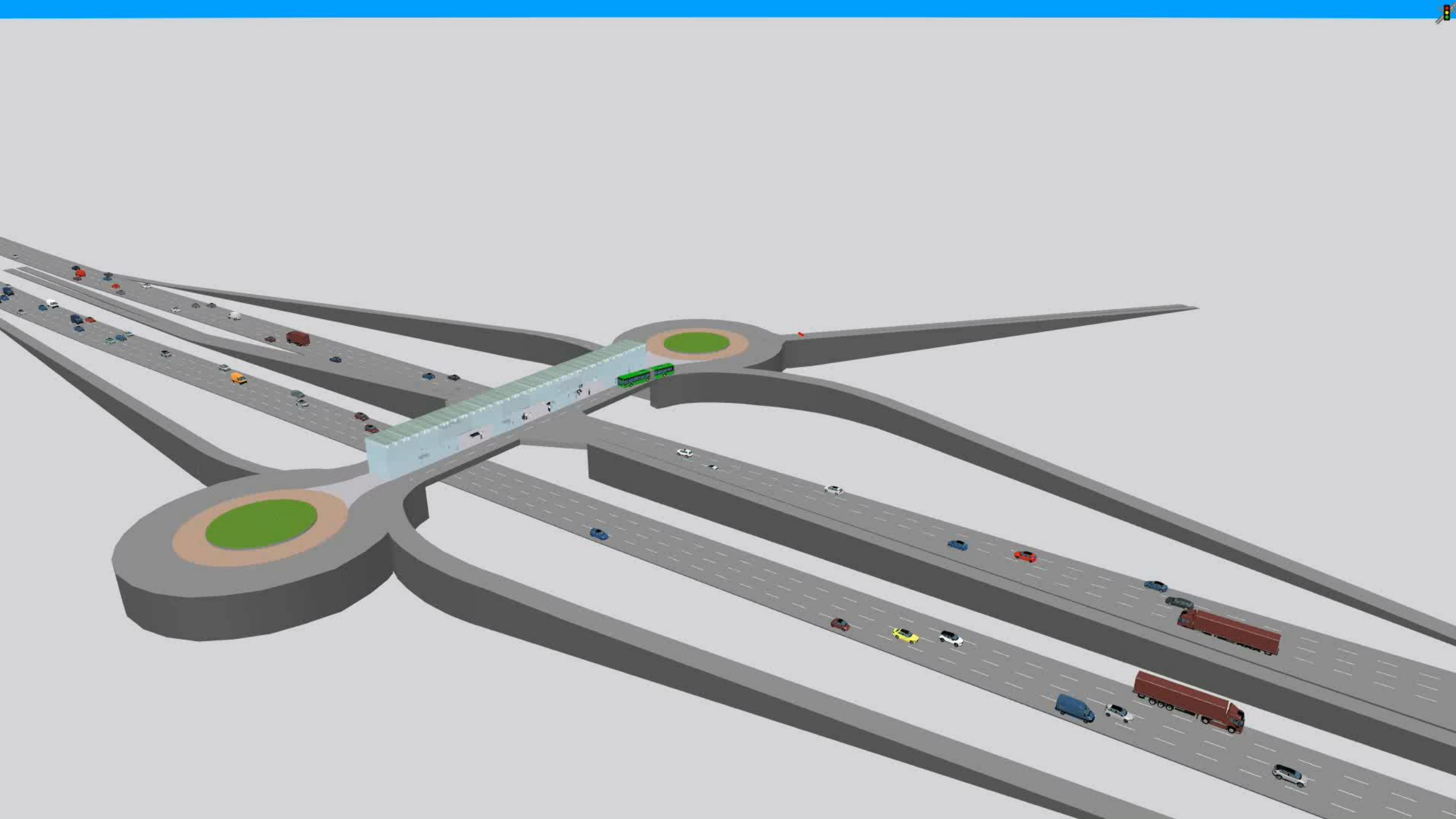
RDU Exchange Station

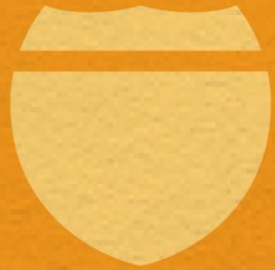
RDU Exchange Station



Design Concept







RTA REGIONAL
BUSINESS
LEADERSHIP



TRANSPORTATION BRUNCH 2025

In Concert with the I-40 Regional Partnership

August 8, 2025 | 9 - 11:30 a.m.
Westin Raleigh-Durham Airport

#RTABRUNCH25

08.08.2025

RTA

REGIONAL
BUSINESS
LEADERSHIP

@RALEIGHCHAMBER #RTABRUNCH25