

Transportation – Transit

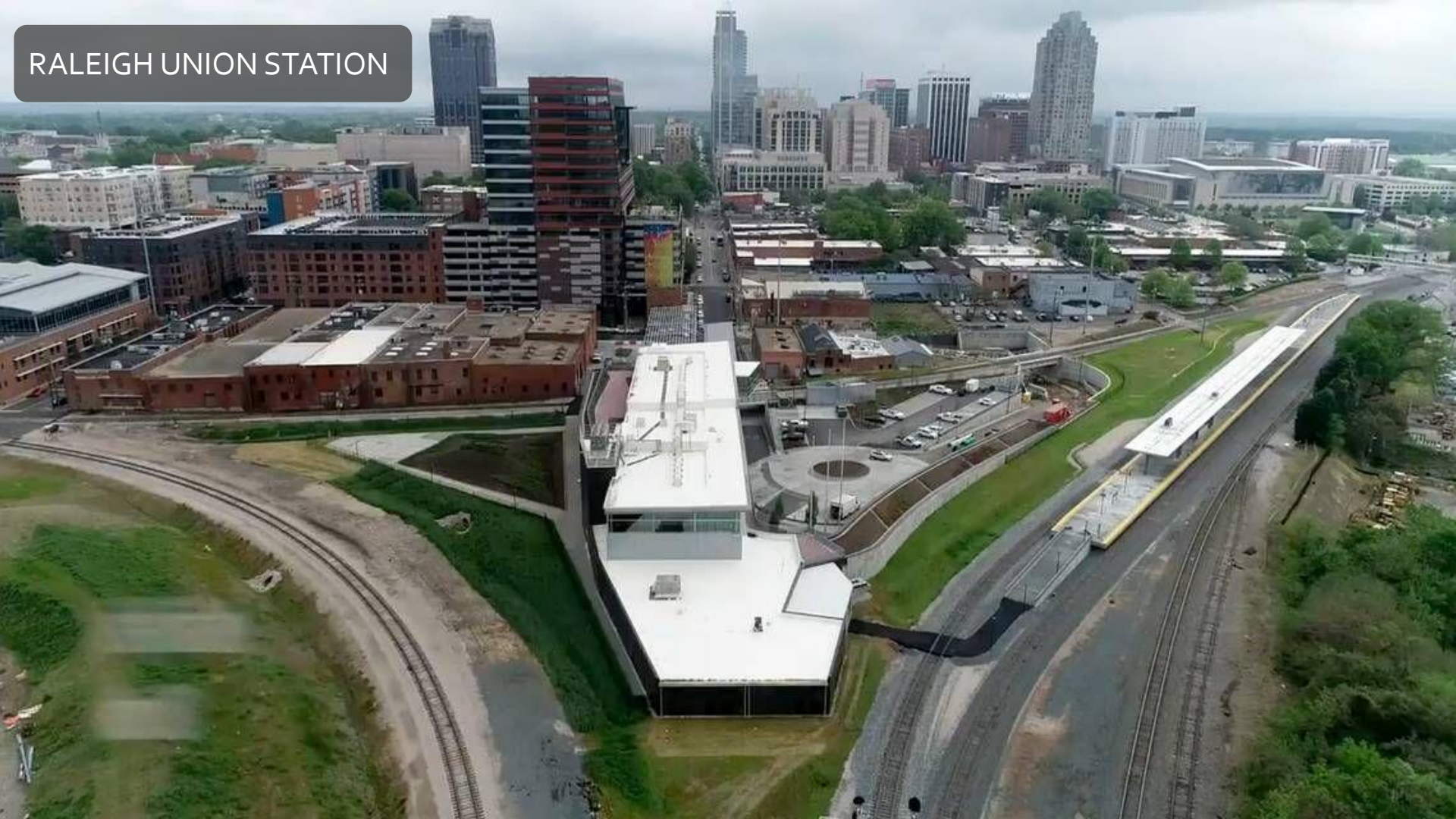
City of Raleigh

*Regional Transportation Alliance (RTA)
Regional Transit Awareness Day*

SEPTEMBER 29, 2022



RALEIGH UNION STATION



Raleigh Union Station - Overview

Raleigh Union Station is a multi-modal transportation hub in downtown Raleigh which includes the adaptive reuse of the industrial Viaduct Building, rail improvements, and increased connectivity within the downtown community.

The very first train departed at **6:30 a.m.** Tuesday July 10, 2018. Today the station has 10 trains daily with over 154,000 train passengers annually.

Raleigh Union Station funding:

Federal	\$53.9 million
State	\$9 million
Local	\$25.9 million



Raleigh Union Station - Overview

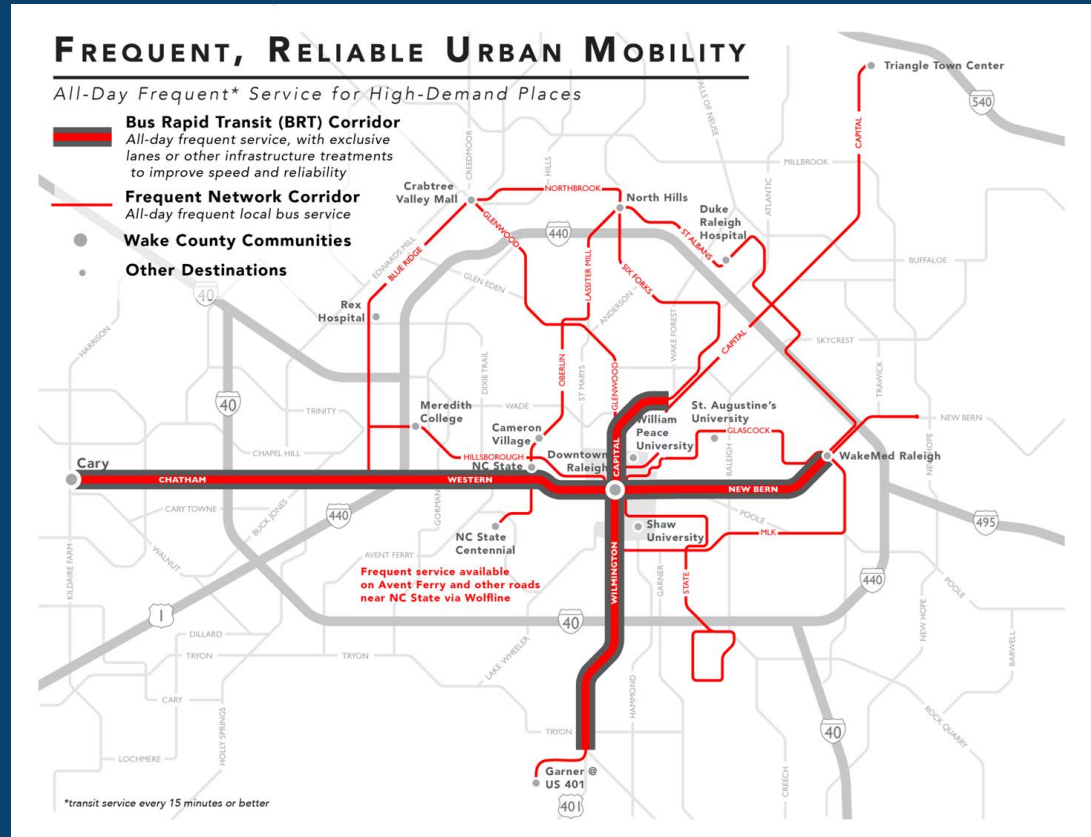


Raleigh Union Station is considered one of downtown's premier event venues as the station hosts corporate events, seminars, weddings, banquets, and galas. The modern, lofty design of Raleigh Union Station fits all needs and can accommodate groups in excess of 700.

GoRaleigh High Frequency Network

Frequent, Reliable Bus Network:

- ▶ Increase the frequent 15 minute service from 17 miles to over 83 miles
- ▶ In addition to the approximate 20 miles of BRT



Wake BRT Program - Features

What is Bus Rapid Transit?

- ▶ Bus Rapid Transit (BRT) is a high-capacity, bus-based transit system that delivers fast, comfortable and cost-effective services. BRT includes enhanced features that differ from local service.



UNIQUE
BRANDING



ENHANCED
STATIONS



OFF-BOARD FARE
COLLECTION



DEDICATED
LANES



LONGER SPAN
OF SERVICE



TRANSIT SIGNAL
PRIORITY



FREQUENT
ON-TIME SERVICE



SPECIALIZED
VEHICLES

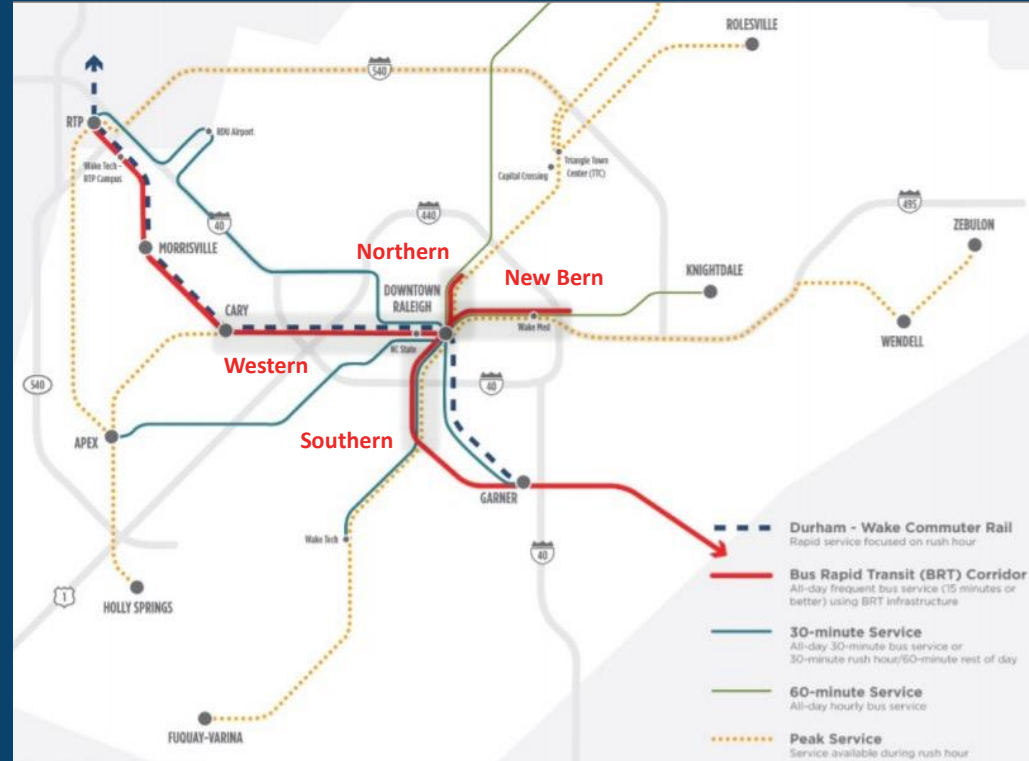
Wake BRT Program - Overview

**City of Raleigh is project sponsor
of the four core BRT corridors:**

- ▶ New Bern - 2025
- ▶ Southern - 2028
- ▶ Western - 2029
- ▶ Northern - 2033

Capital Area MPO studying two (2) Wake BRT extensions:

- ▶ Garner to Clayton
- ▶ Cary to Research Triangle Park (RTP)



Wake BRT Program - Recent Milestones

New Bern Avenue

- ▶ Full Funding Grant Agreement (FFGA)
- ▶ 90% design complete

Southern Corridor

- ▶ Submitted for Small Starts Ratings
- ▶ 10% design complete

Western Corridor

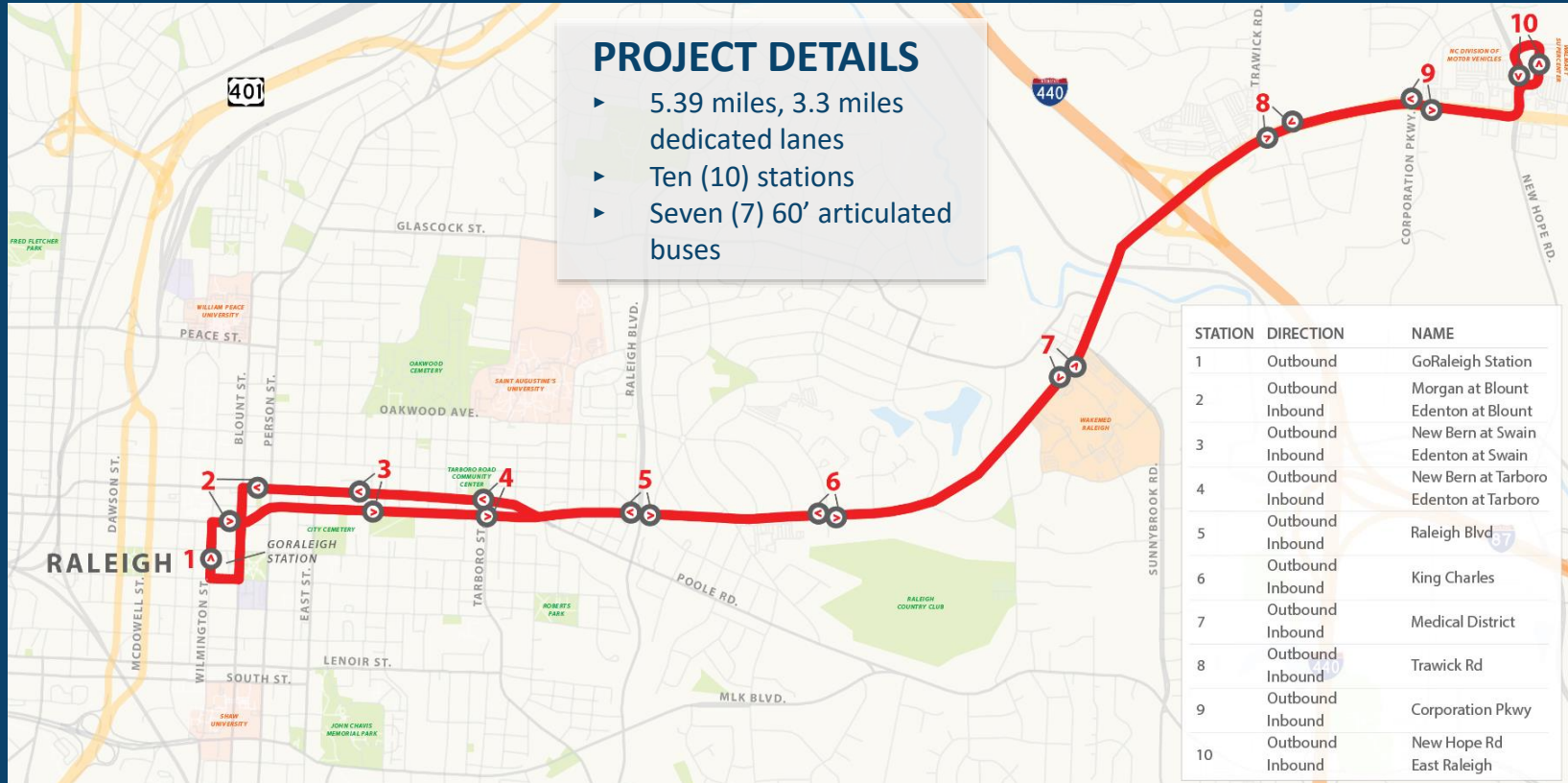
- ▶ 10% design complete

Northern Corridor

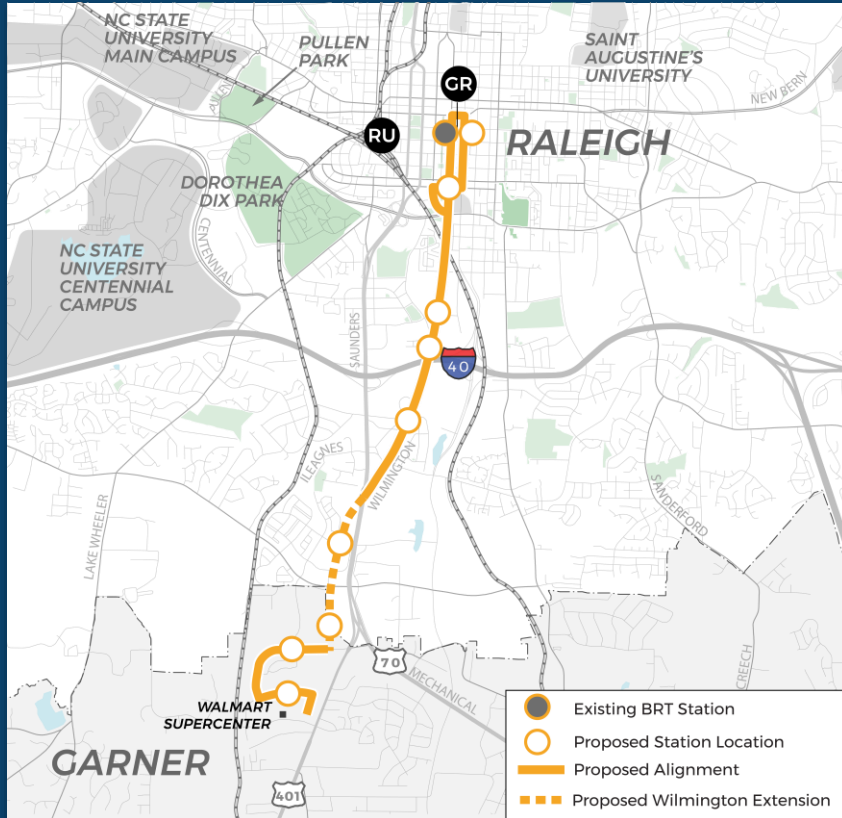
- ▶ Planning study kick-off



Wake BRT: New Bern Avenue



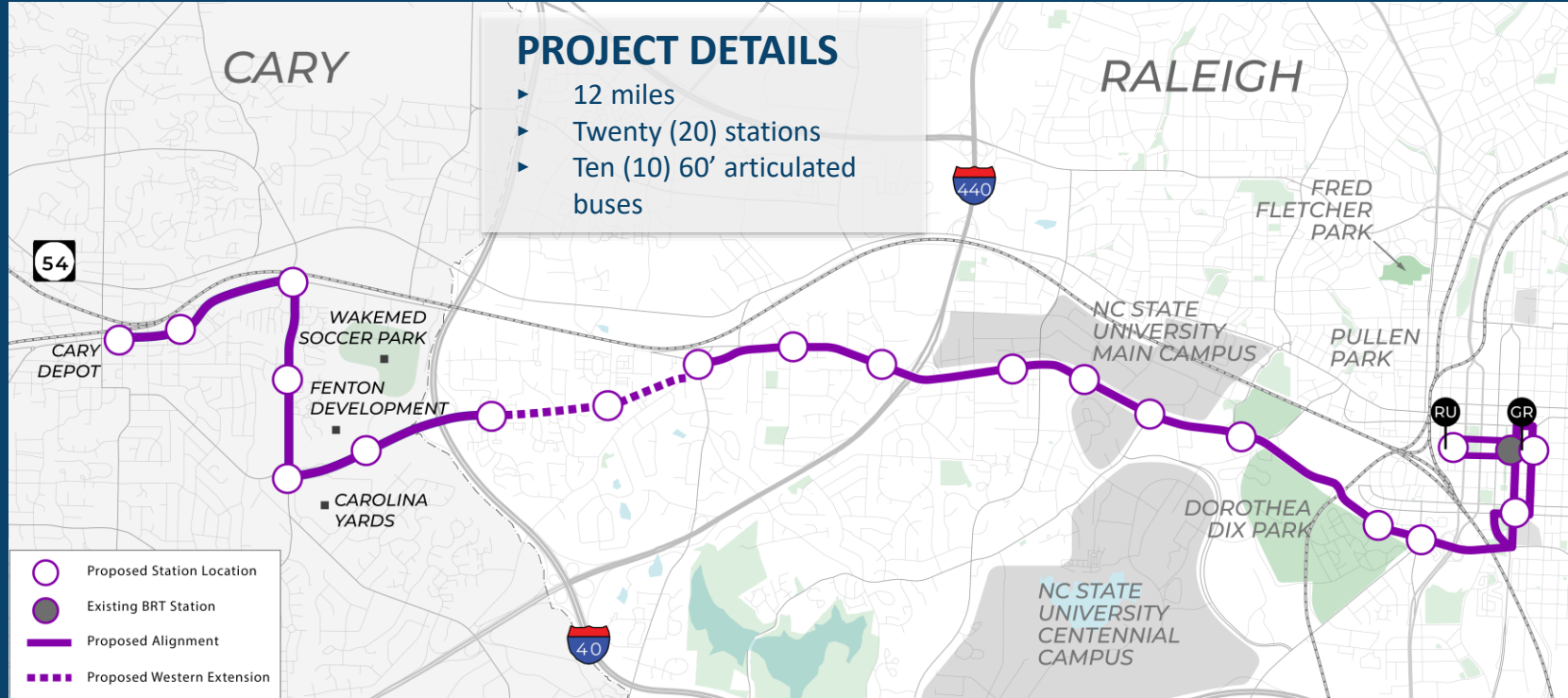
Wake BRT: Southern Corridor



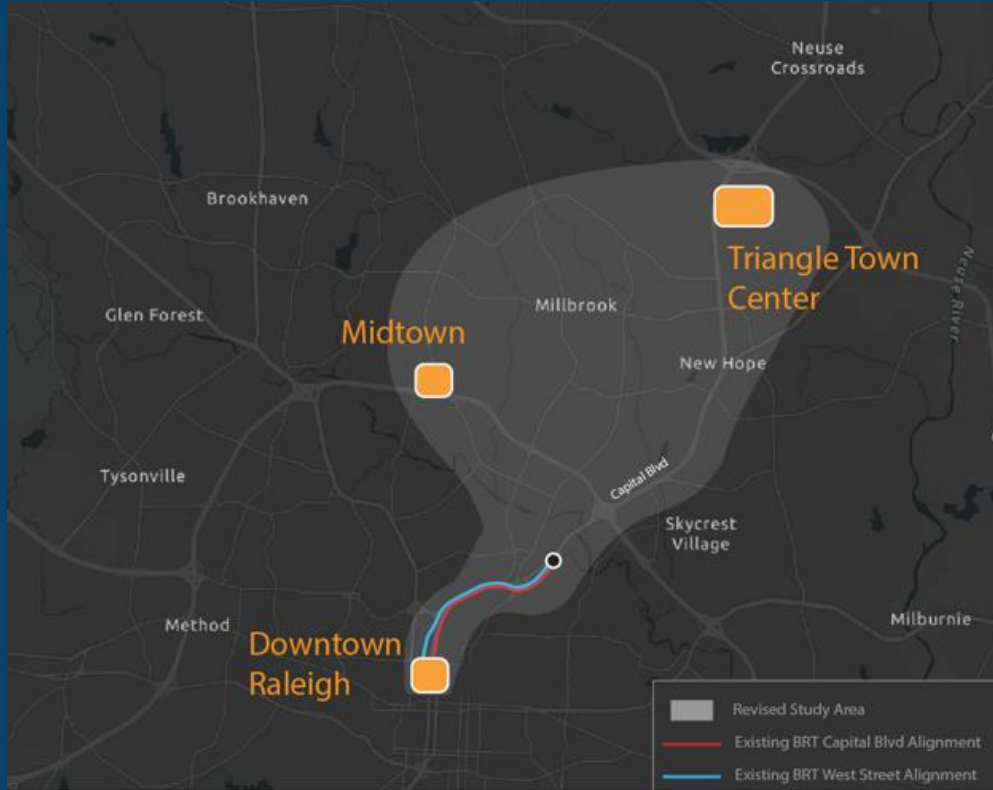
PROJECT DETAILS

- ▶ 5.1 miles, 3.8 miles dedicated lanes
- ▶ Ten (10) stations, nine (9) new
- ▶ Seven (7) 60' articulated buses

Wake BRT: Western Corridor



Wake BRT: Northern Corridor



MAJOR INVESTMENT STUDY

- ▶ Duration 12 to 18 months
- ▶ Scope includes identifying route recommendation for connection to midtown Raleigh and Triangle Town Center and Wake Tech North

MEDICAL DISTRICT



EDENTON AT BLOUNT



RALEIGH BLVD



GORALEIGH STATION

An architectural rendering of the proposed GORaleigh Station. The station building is a modern, two-story structure with a mix of materials, including light-colored panels and dark-framed windows. A covered platform area with glass walls and a dark roof extends from the building. Several people are shown using the station, including a person with a stroller and others sitting on benches. A yellow and white bus is stopped at the platform, and a silver SUV is driving on the street in the foreground. The station is located on a city street with other buildings in the background, including a red brick building and a white brick building. The sky is blue with scattered clouds.

RALEIGH UNION STATION

