

# 2022 REGIONAL LEADERSHIP TOUR

to South Florida



# RTA

REGIONAL  
**BUSINESS**  
LEADERSHIP

Presented by  
GoTriangle and  
the NC Railroad Company





# JIMMY MORALES

## Miami-Dade County

**RTA** REGIONAL  
BUSINESS  
LEADERSHIP



**2022**  
**REGIONAL LEADERSHIP TOUR**  
to South Florida

Presented by  
GoTriangle and  
the NC Railroad Company





# **JUAN CARLOS BERMUDEZ**

## **Miami-Dade TPO/City of Doral**

**RTA** REGIONAL  
BUSINESS  
LEADERSHIP



**2022**  
**REGIONAL LEADERSHIP TOUR**  
to South Florida

Presented by  
GoTriangle and  
the NC Railroad Company



# WEDNESDAY AFTERNOON SPEAKERS

**AILEEN BOUCLÉ**

Miami-Dade TPO

**EULOIS CLECKLEY**

Miami-Dade County DOT and Public Works

**STACY MILLER**

Florida DOT (FDOT)

**PATRICE GILLESPIE SMITH**

Friends of the Underline

**JAVIER BETANCOURT**

**Citizen Independent  
Transportation Trust**



Presented by  
GoTriangle and  
the NC Railroad Company



# AILEEN BOUCLÉ

## Miami-Dade TPO



**RTA** REGIONAL  
BUSINESS  
LEADERSHIP

  
**2022**  
**REGIONAL LEADERSHIP TOUR**  
to South Florida

Presented by  
GoTriangle and  
the NC Railroad Company



# North Carolina RTA Regional Leadership Delegation

**TP**



Miami-Dade Transportation  
Planning Organization

# Strategic Miami Area Rapid Transit “SMART” Plan

Aileen Bouclé, AICP

Miami-Dade TPO Executive Director

March 30, 2022



# Governing Board Members



**Chairman**  
Oliver G. Gilbert III  
Miami-Dade County



**Vice Chairman**  
Juan Carlos Bermudez  
City of Doral



Philippe Bien-Aime  
City of North Miami



Esteban Bovo Jr.  
City of Hialeah



Danielle Cohen Higgins  
Miami-Dade County



Jose "Pepe" Diaz  
Miami-Dade County



René Garcia  
Miami-Dade County



Perla T. Hantman  
School Board



Keon Hardemon  
Miami-Dade County



Rodney Harris  
Miami-Dade County



Sally A. Heyman  
Miami-Dade County



Eileen Higgins  
Miami-Dade County



Vince Lago  
City of Coral Gables



Steven D. Losner  
City of Homestead



Roberto Martell  
Municipal Rep.



Joe A. Martinez  
Miami-Dade County



Kionne L. McGhee  
Miami-Dade County



Jean Monestime  
Miami-Dade County



Raquel A. Regalado  
Miami-Dade County



David Richardson  
City of Miami Beach



Rebeca Sosa  
Miami-Dade County



Sen. Javier D. Souto  
Miami-Dade County



Francis Suarez  
City of Miami





Eulois Cleckley, Director and CEO  
Miami-Dade County Department of  
Transportation & Public Works



Stacy L. Miller, P.E., District Secretary  
Florida Department of Transportation  
District Six



Javier A. Betancourt, Executive Director  
Citizens' Independent Transportation Trust



# SMART Plan SMART Region

## Six (6) Rapid Transit Corridors

- ✓ Beach
- ✓ East-West
- ✓ Kendall
- ✓ North
- ✓ Northeast
- ✓ South

(1) Project Development & Environment Phase

(2) Implementation Plan for each corridor

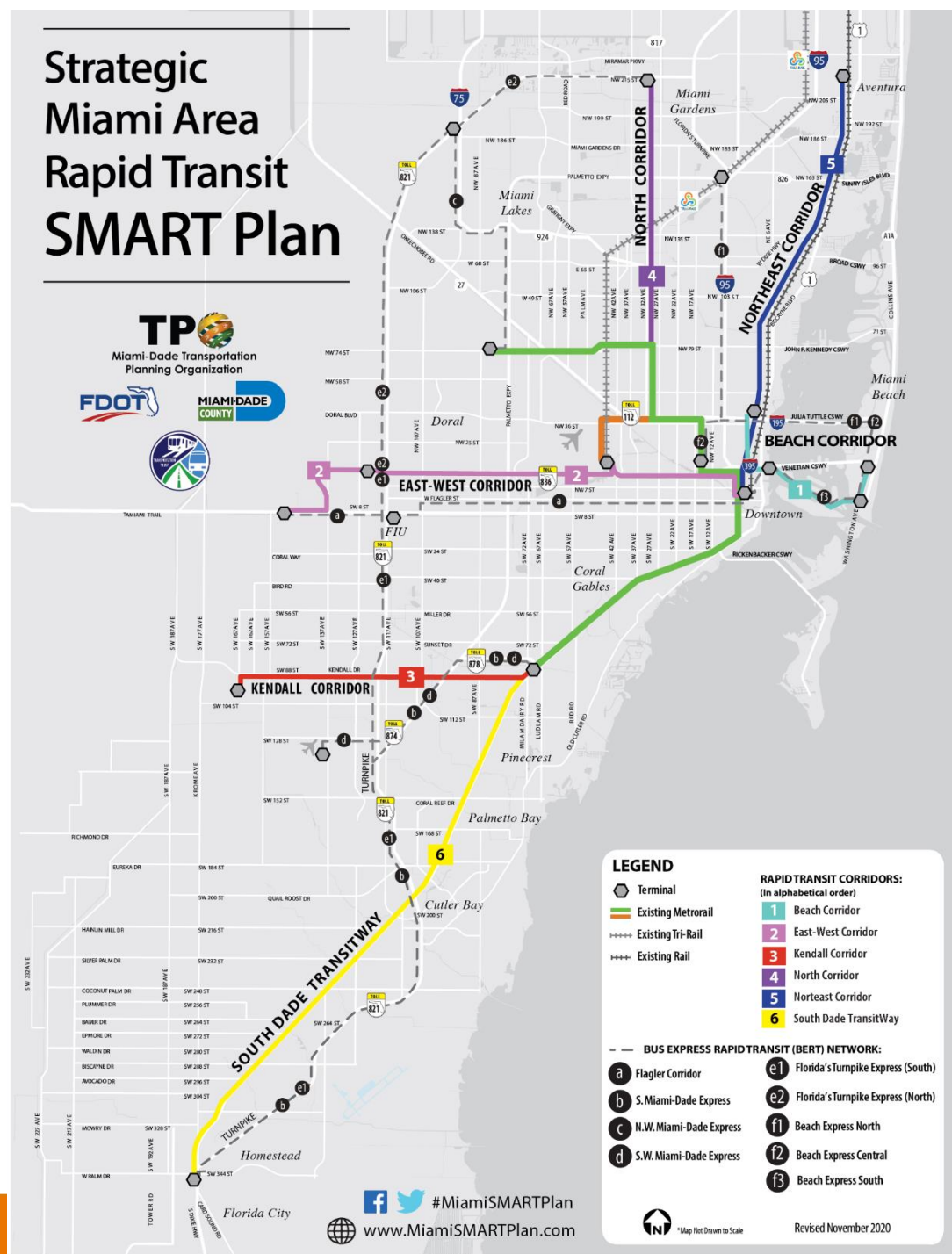
## Six (6) Bus Express Rapid Transit Corridors

- ✓ Beach Express
- ✓ Flagler Street
- ✓ Florida Turnpike
- ✓ NW Miami-Dade Express
- ✓ S Miami-Dade Express
- ✓ SW Miami-Dade Express

Over 90 miles of express bus network

Supported by the TPO Governing Board, Miami-Dade County, Municipalities, State and multiple entities

## Strategic Miami Area Rapid Transit SMART Plan





# Strategic Miami Area Rapid Transit (SMART) Plan

## THE THREE PILLARS

CHOICE

COMMUNITY

CONNECTIVITY

## THE SMART PLAN

### WHY IS THE SMART PLAN SO CRITICAL?

The SMART Plan includes rapid transit corridors and express bus routes to increase connectivity for approximately **77%** of Miami-Dade County residents that travel outside their residential district for employment to other areas of the County.

### SMART PLAN FACTS

**1.7** MILLION  
RESIDENTS

More than half of the County's population live within 2-miles of SMART Plan Corridors.

**855,000**  
JOBS

Are located within a 2-mile radius of SMART Plan Corridors.

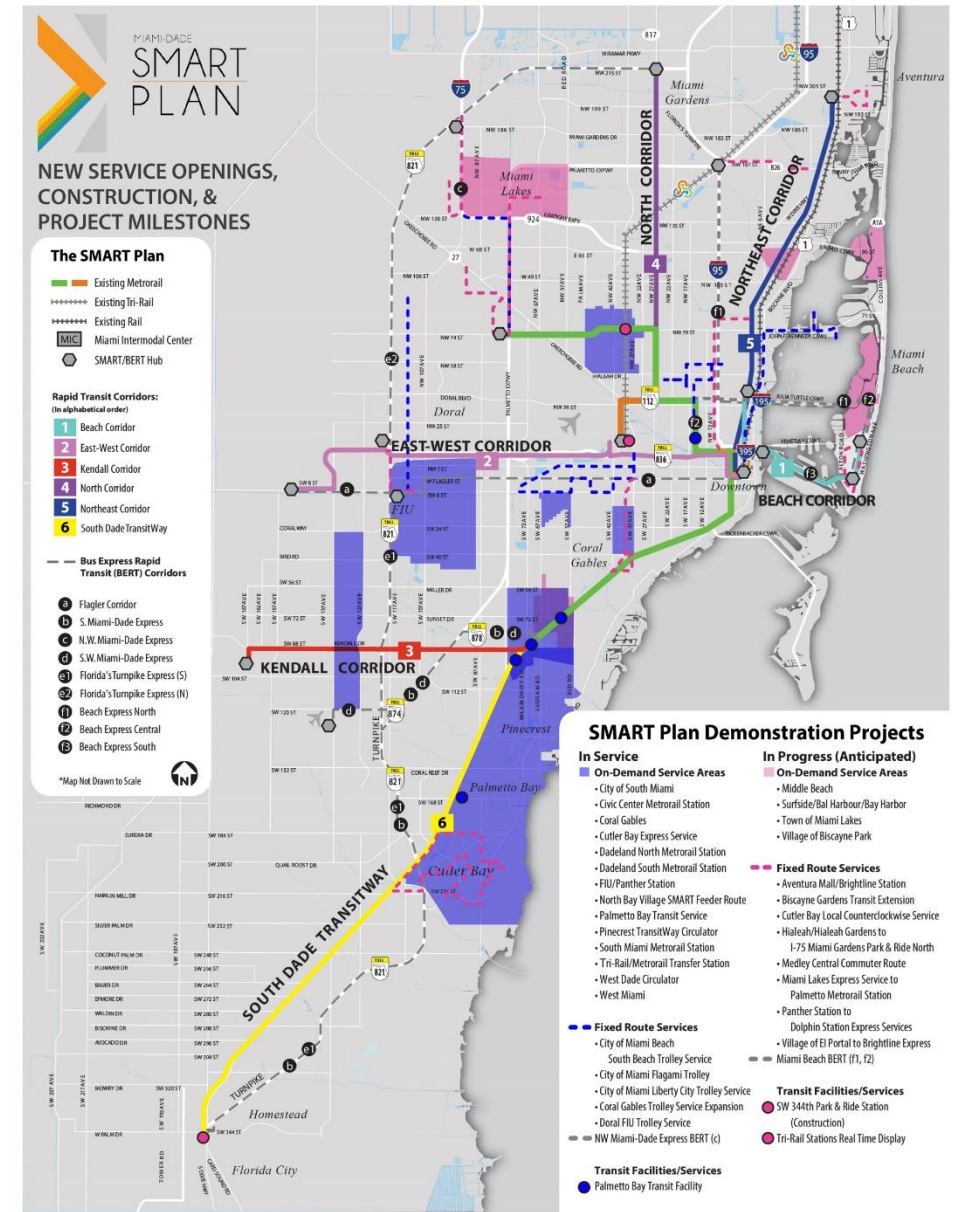






# In Service Demonstration Program Projects

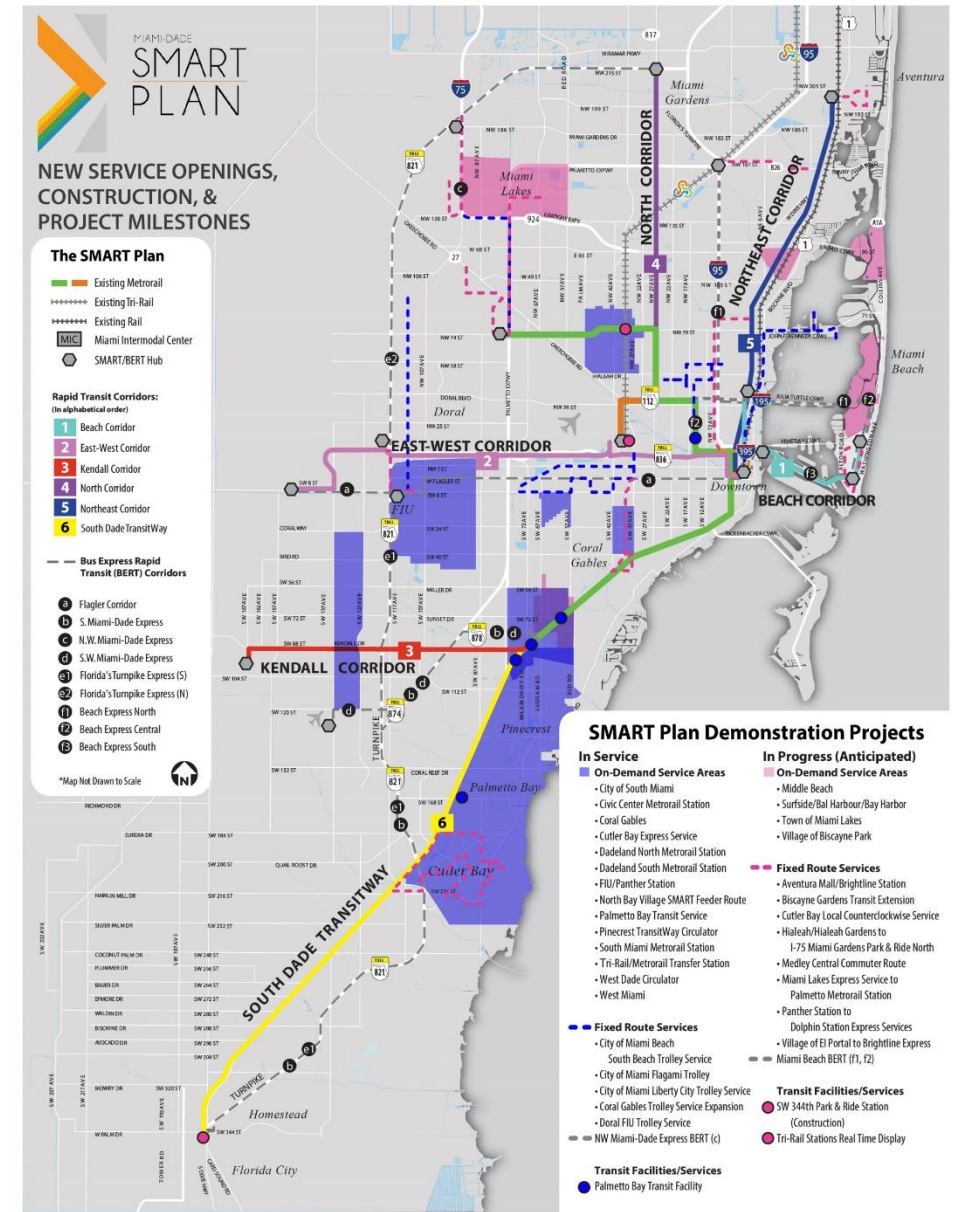
- City of Miami Beach South Beach Trolley Service – **November 2017**
- City of Miami Flagami Trolley – **July 2018**
- City of Miami Liberty City Trolley Service – **August 2019**
- Doral FIU Trolley Service – **August 2018**
- Coral Gables On-Demand Service – **January 2019**
- Pinecrest Transitway Circulator – **January 2019**
- North Bay Village SMART Feeder Route – **July 2019**
- Palmetto Bay Transit Service – **July 2019**
- Palmetto Bay Transit Facility – **March 2019**
- West Miami On-Demand Service – **August 2020**
- FIU/Panther Station On-Demand Service – **September 2020**
- Area On-Demand Services:
  - South Miami Metrorail Station – **October 2020**
  - Dadeland North Metrorail Station – **October 2020**
  - Dadeland South Metrorail Station – **October 2020**
  - Civic Center Metrorail Station – **February 2021**
- Cutler Bay Express Service – **December 2020**
- City of South Miami On-Demand Service – **December 2020**
- Aventura Mall/Brightline Station – **May 2021**
- West Dade Circulator On-Demand Service – **February 2021**
- Coral Gables Trolley Service Expansion
- Tri-Rail/Metrorail Transfer Station On-Demand Service – **August 2021**





# In Progress Demonstration Program Projects

- Miami Lakes Express Service to Palmetto Metrorail Station – **Fall 2021**
- Village of El Portal to Brightline Express Service – **Fall 2021**
- Medley Central Commuter Route – **Fall 2021**
- Biscayne Gardens Transit Extension – **Fall 2021**
- Surfside/Bal Harbour/Bay Harbor On-Demand Service – **Fall 2021**
- Panther Station to Dolphin Station Express Service – **Fall 2021**
- Hialeah/Hialeah Gardens to I-75 Miami Gardens Park & Ride – **Fall 2021**
- Cutler Bay Local Counterclockwise Service – **Spring 2022**
- Middle Beach On-Demand Service – **Approved June 2021**
- Tri-Rail Stations Real Time Displays – **Approved June 2021**
- Village of Biscayne Park On-Demand Service – **Approved June 2021**
- SW 344th Park & Ride Station (Construction) – **2024**





# Miami-Dade County SMART Demonstration Program

## Quarterly Monitoring Reports

### RIDER SATISFACTION:

- ✓ Ridership per Quarter
- ✓ Ridership Growth Percentage

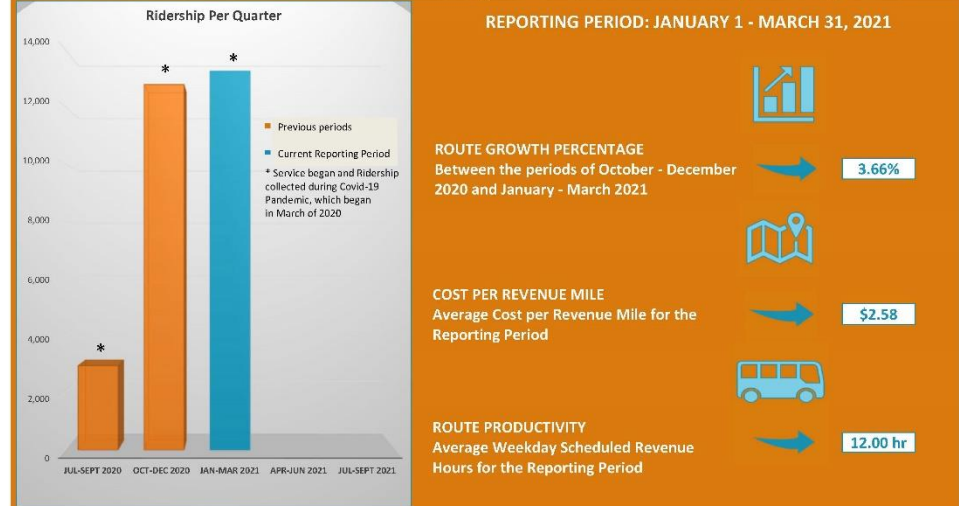
### RETURN ON TRANSIT INVESTMENT:

- **Cost Per Revenue Mile:** *Average Cost per Revenue Mile for the Reporting Period*
- **Route Productivity:** *Average Weekday Scheduled Revenue Hours for Reporting Period*





The Miami-Dade Transportation Planning Organization (TPO), in partnership with the Florida Department of Transportation, the Citizen's Independent Transportation Trust, the Department of Transportation and Public Works and municipalities throughout Miami-Dade County has coordinated to advance the SMART Plan with the opening of numerous SMART Plan Demonstration projects. These demonstration projects focus on increasing first-last mile connectivity to existing and future SMART Plan transit stations and on-demand and enhanced integration of transit services at county and municipal levels.



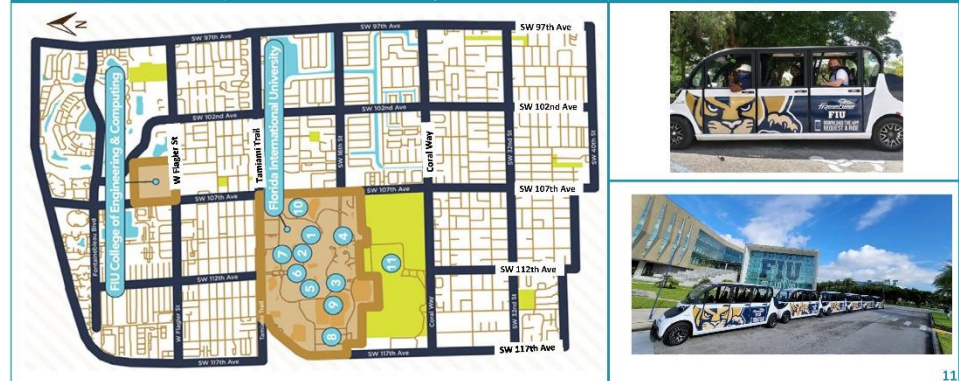
#### PROJECT DESCRIPTION

The FIU/Panther Station On Demand Service provides First-Last Mile On-Demand Transit Service connectivity to a 2-mile service area around FIU/Panther Station. Service area includes the Fontainebleau neighborhood to the north, SW 40 Avenue to the south, SW 97 Avenue to the east and SW 117 Avenue to the west.

#### SMART PLAN CONNECTIVITY

Provides connectivity to Panther Station and the East-West Corridor

SERVICE SCHEDULE	TPO APPROVAL	TOTAL FUNDING	FUNDING SUMMARY
ON DEMAND SERVICE Monday - Friday 7:00 AM - 7:00 PM	June 20, 2019 (TPO Resolution #37-19)	\$405,000	Funded FY 2021 (Service Development Program) State Funded



11

The Miami-Dade Transportation Planning Organization (TPO), in partnership with the Florida Department of Transportation, the Citizen's Independent Transportation Trust, the Department of Transportation and Public Works and municipalities throughout Miami-Dade County has coordinated to advance the SMART Plan with the opening of numerous SMART Plan Demonstration projects. These demonstration projects focus on increasing first-last mile connectivity to existing and future SMART Plan transit stations and on-demand and enhanced integration of transit services at county and municipal levels.



#### PROJECT DESCRIPTION

The Flagami Trolley provides for an increase in trolley operations in the City of Miami by providing and promoting multimodal transportation options via its connections to the Little Havana Trolley Route, the City of Coral Gables Trolley and the Miami Intermodal Center which connects to Tri-Rail, Greyhound, Airport MIA Mover and Amtrak.

#### SMART PLAN CONNECTIVITY

Provides connectivity to Miami Intermodal Center, with connections to Metrorail and Tri-Rail

SERVICE SCHEDULE	TPO APPROVAL	TOTAL FUNDING	FUNDING SUMMARY
FLAGAMI TROLLEY Monday - Saturday 6:30 AM - 11:00 PM	June 21, 2018 (TPO Resolution #30-18)	\$3,600,000	Funded FYs 2019, 2020 & 2021 (Service Development Program) State Funds



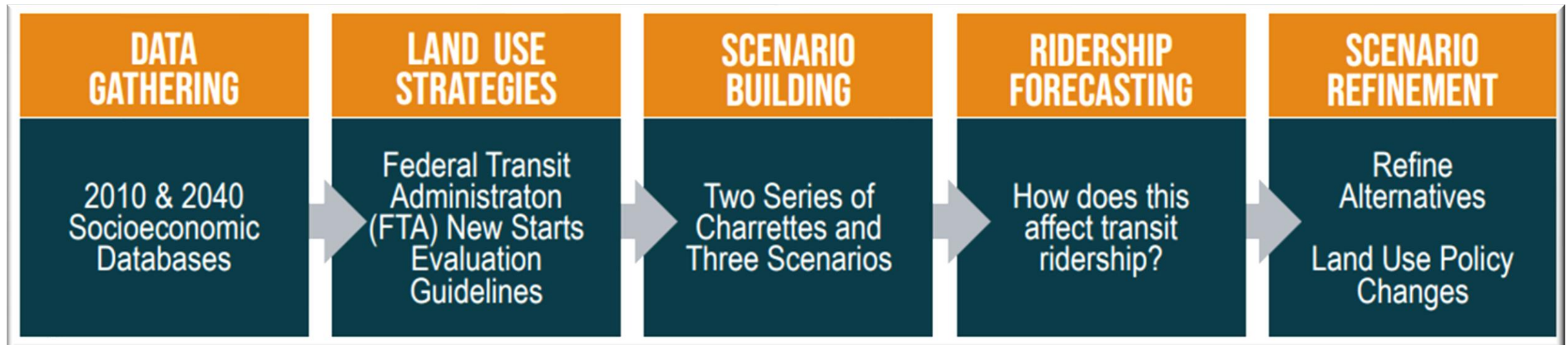
5



# Concurrent Activities



# Land Use Scenario Planning – The Process







### North Corridor Preferred Land Use Scenario



**110,900 (2040) to 124,500 (PS)**

An increase of **13,600** in population  
or **12 % higher** than in 2040



**30,200 (2040) to 76,000 (PS)**

An increase of **45,800** jobs or  
over **2x higher** than in 2040

### South Corridor Preferred Land Use Scenario



**72,900 (2040) to 97,400 (PS)**

An increase of **24,500** in population  
or **33 % higher** than in 2040



**60,200(2040) to 79,800 (PS)**

An increase of **19,600** jobs or  
**32% higher** than in 2040



# THANK YOU!

**Aileen Bouclé, AICP**  
**Executive Director**

[www.MiamiDadeTPO.org](http://www.MiamiDadeTPO.org)

 [#MiamiSMARTPlan](https://twitter.com/MiamiSMARTPlan)





# EULOIS CLECKLEY

## Miami-Dade County DOT and Public Works



Presented by  
GoTriangle and  
the NC Railroad Company



# Stacy MILLER, Florida DOT (FDOT)



**RTA** REGIONAL  
BUSINESS  
LEADERSHIP

  
**2022**  
**REGIONAL LEADERSHIP TOUR**  
to South Florida

Presented by  
GoTriangle and  
the NC Railroad Company



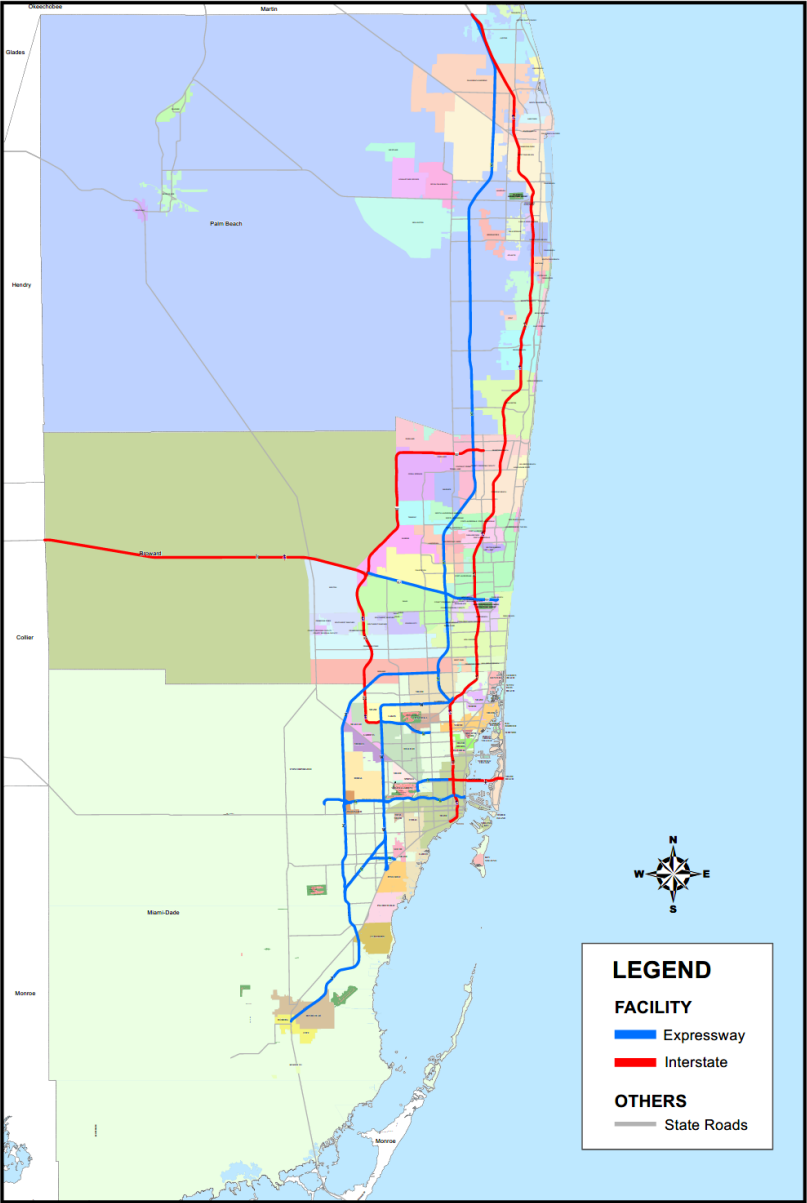


## **North Carolina Regional Transportation Alliance Leadership Tour**

Presented By: Stacy L. Miller, PE  
District Six Secretary



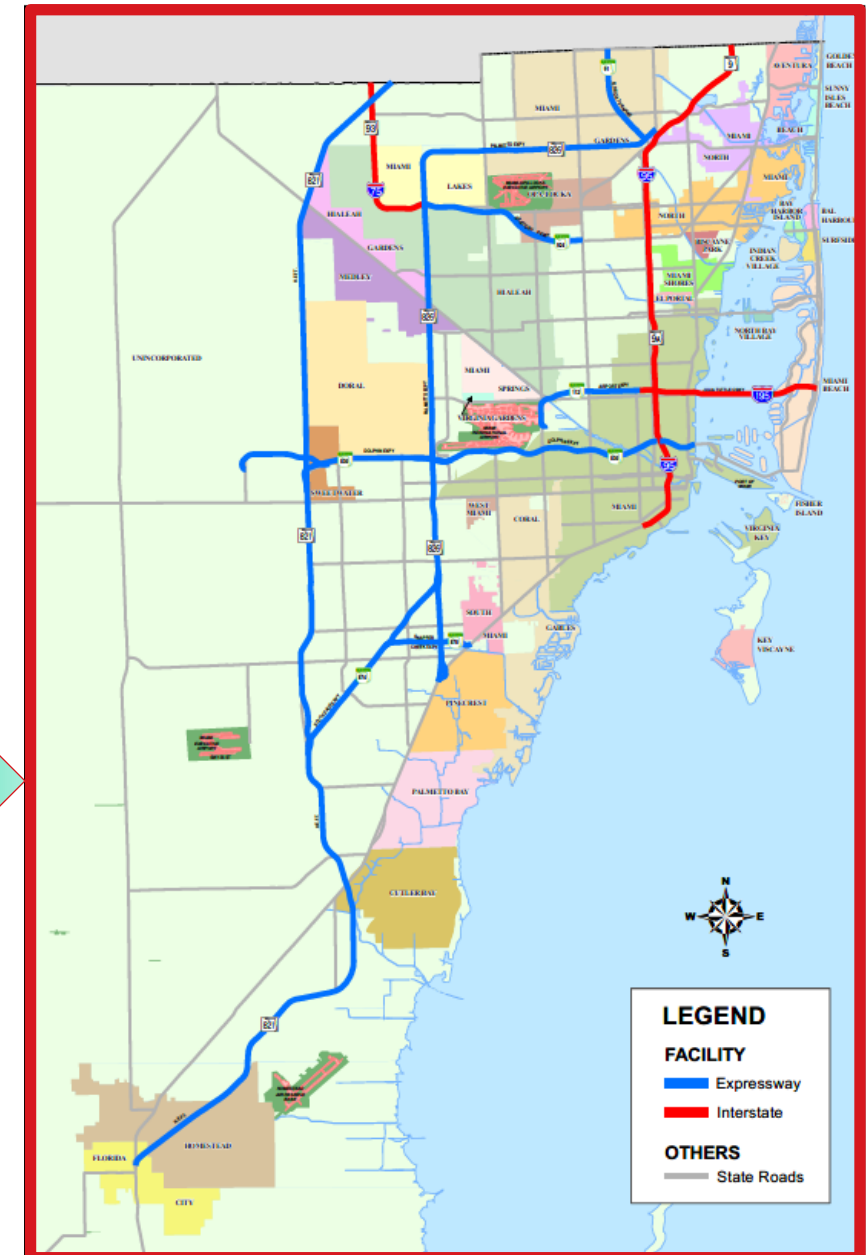
# Tri-County Major Corridors Map







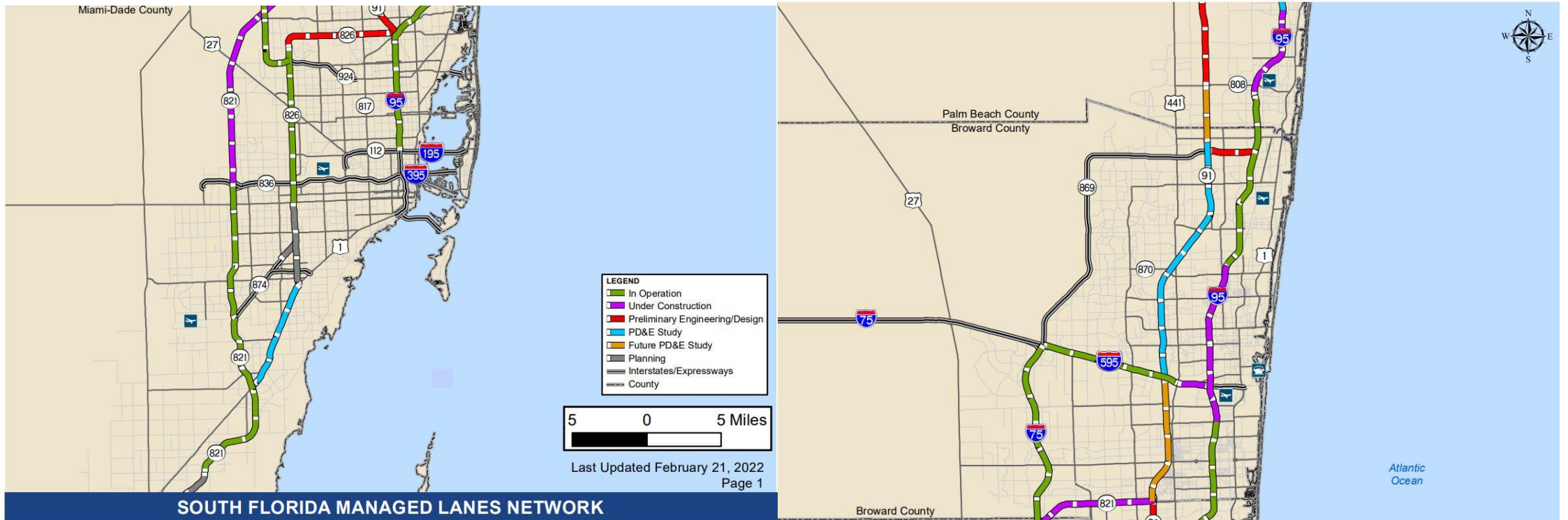
# MIAMI-DADE COUNTY



# Express Lane Network











# Express Bus Program



- The Express bus services provide transit users with a reliable and rapid transit option that takes advantage of Express Lanes while reducing roadway congestion for vehicles.
- FDOT District Six provides funding to Miami-Dade County Department of Transportation and Public Works (DTPW) for operation of express bus routes
- The routes below service the following major attractions in Miami-Dade and Broward County:

### I-75 Express Bus Service (Western Miami-Dade County)



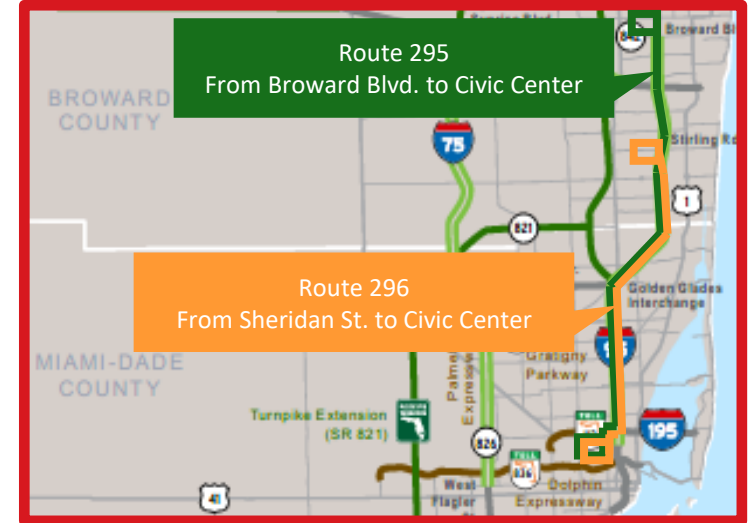
**Buses run on I-75 & SR 826 Managed Lanes**

### I-95 Express Bus Service (Eastern Broward to Miami-Dade)



**Buses run on I-95 Managed Lanes**

### I-95 Express Bus Service (Eastern Broward to Miami-Dade)



**Buses run on I-95 Managed Lanes**





# Lane Repurposing



# What is Lane Repurposing?

- Also known as a road diet, lane reduction, or lane elimination.
- It reassigns roadway space to achieve safety and mobility for all users.
- It can contribute to the economic development and livability for the community.
- Common uses are:
  - separated or buffered bicycle lanes,
  - wider sidewalks,
  - landscaping,
  - on-street parking,
  - transit bulb-outs,
  - traffic calming,
  - transit lanes, and
  - pedestrian refuge islands.



Safety, Mobility, Innovation

## Lane Repurposing Guidebook

AUGUST 2020



FLORIDA DEPARTMENT OF TRANSPORTATION  
SYSTEMS IMPLEMENTATION OFFICE

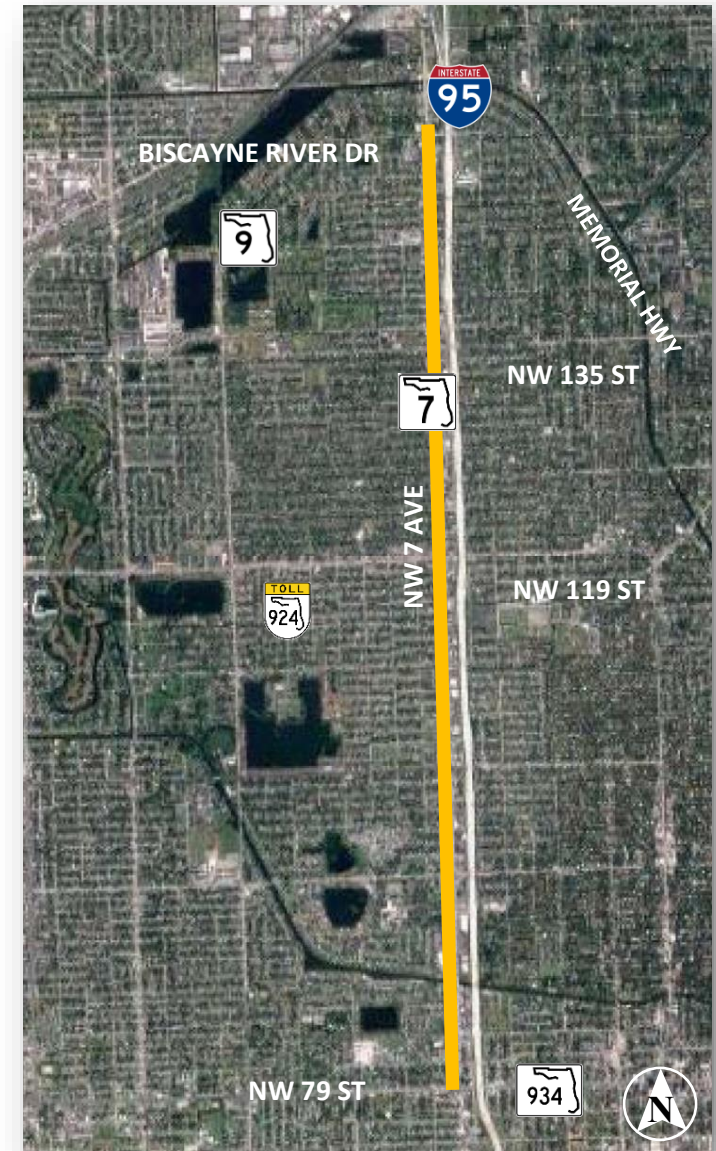


# SR 7 from North of NW 79<sup>th</sup> Street to South of Biscayne Canal (5 miles)

## Improvements

- Reduce speed limit from 40 mph to 35 mph to improve safety
- Repurpose outside travel lanes to provide on-street parking and bicycle lanes
- Incorporate raised landscaped medians
- Add pedestrian improvements including bulb-outs at select signalized intersections and special emphasis crosswalks

## Next Step: Before and After Study

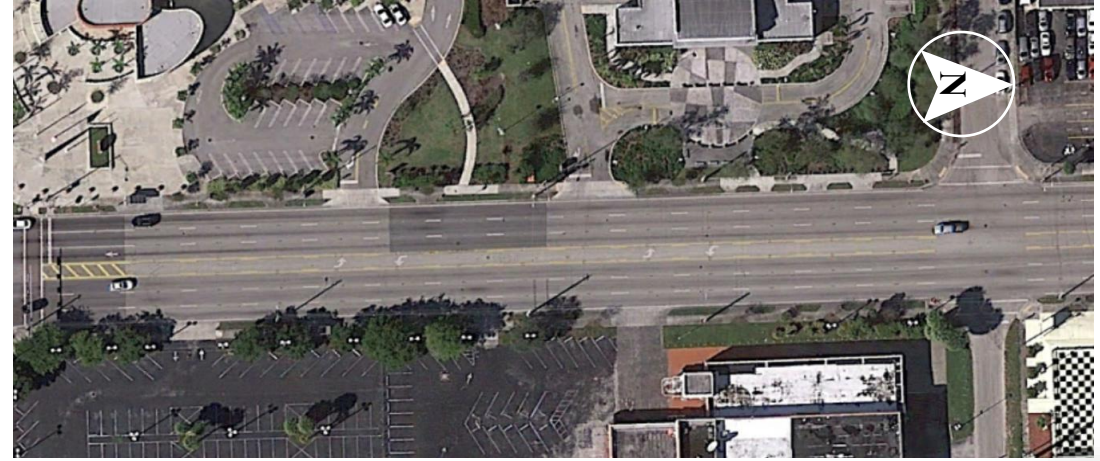
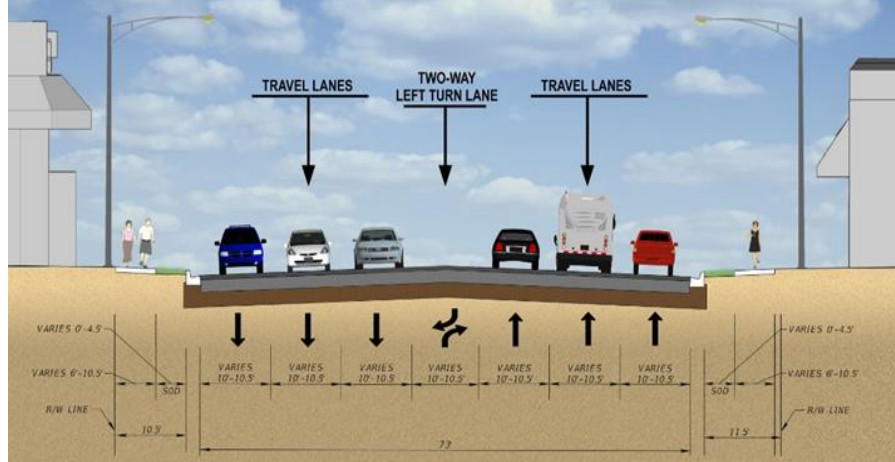




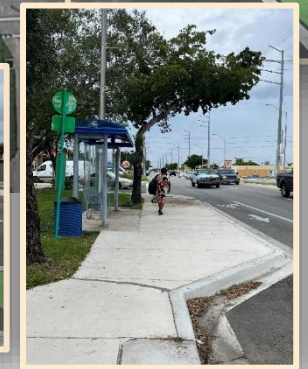
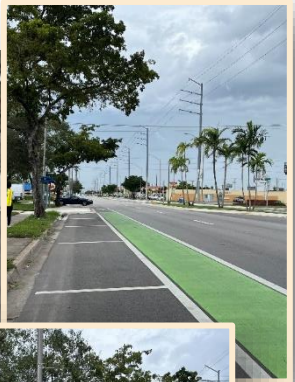
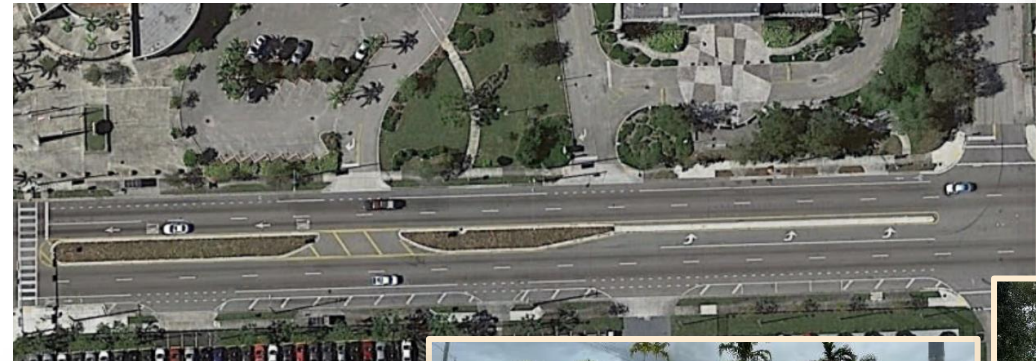
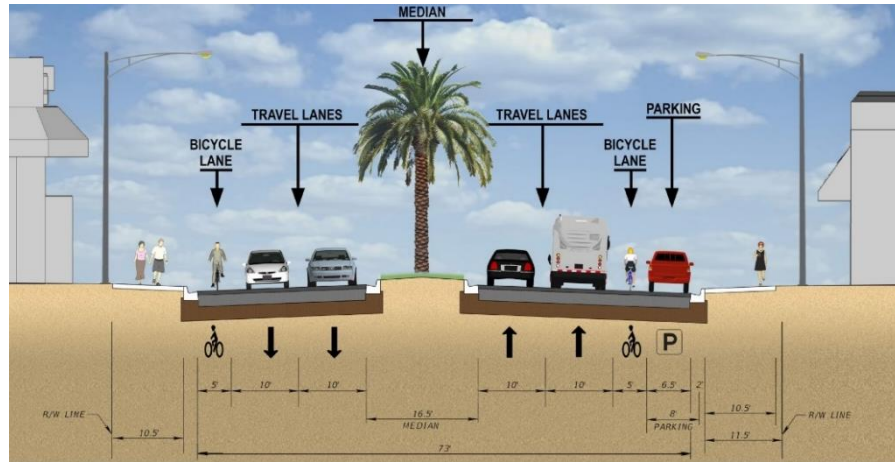
# SR 7 from North of NW 79<sup>th</sup> Street to South of Biscayne Canal

## Lane Repurposing

Before Lane Repurposing



After Lane Repurposing



North of NW 79<sup>th</sup> Street to NW 119<sup>th</sup> Street Section



## District 6 Projects Overview

- SR 7 / US 441 / NW 7<sup>th</sup> Avenue – *Completed and Implemented*
- SR 968 / SW 1<sup>st</sup> Street – *Completed and Implemented*
- SR 5 / US 1 / Biscayne Boulevard – Biscayne Green – *In process*
- SR 934 / NE 79<sup>th</sup> Street / John F. Kennedy Causeway – *In process*
- SR 907 / W 63<sup>rd</sup> Street – *Study Completed/Project not Implemented*
- SR A1A / S Roosevelt Boulevard – *Study Completed/Project not Implemented*

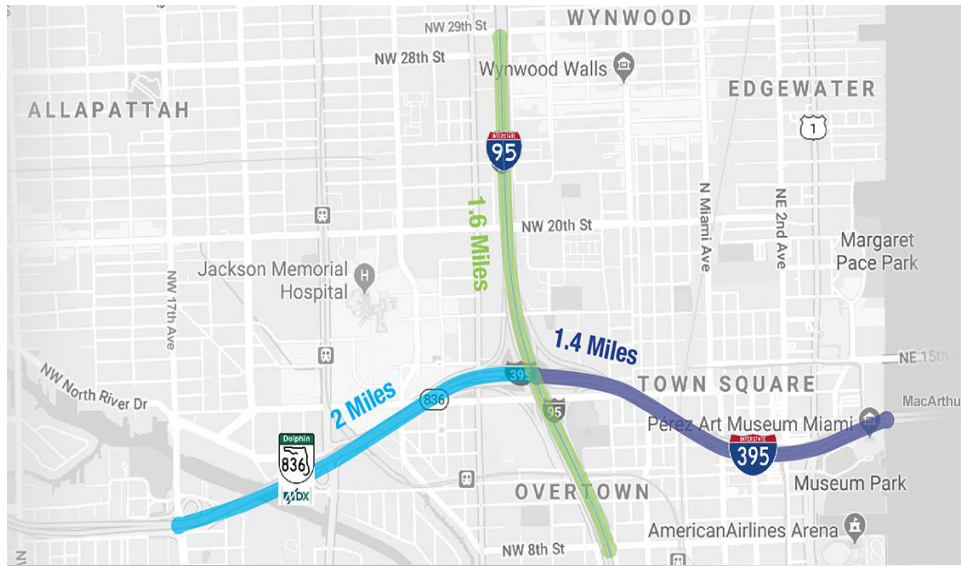
# I-395/SR 836/I-95 Design Build Project and Underdeck





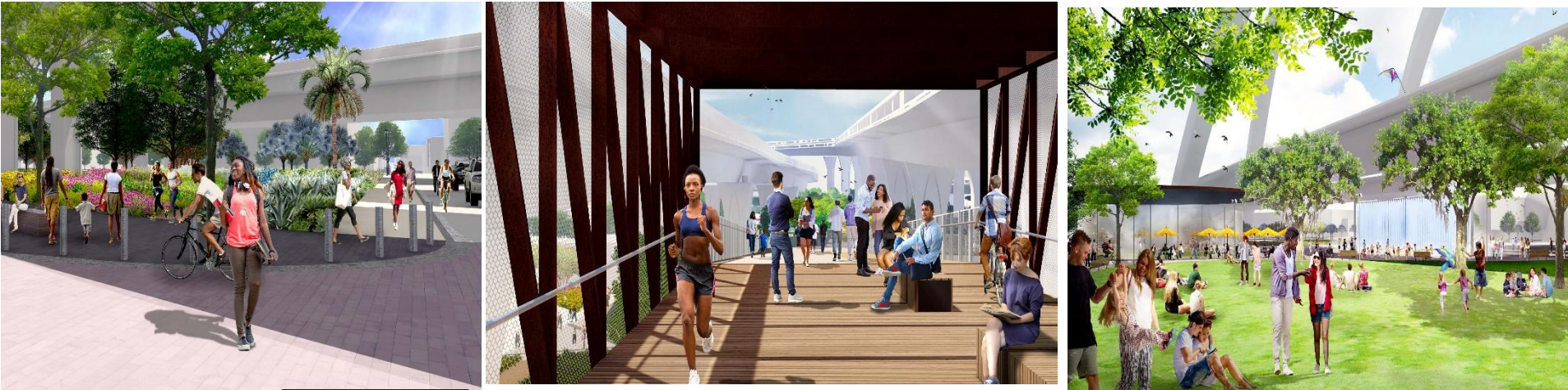
# I-395/SR 836/I-95 Design Build Project

## Florida Department of Transportation



Safety, Mobility, Innovation

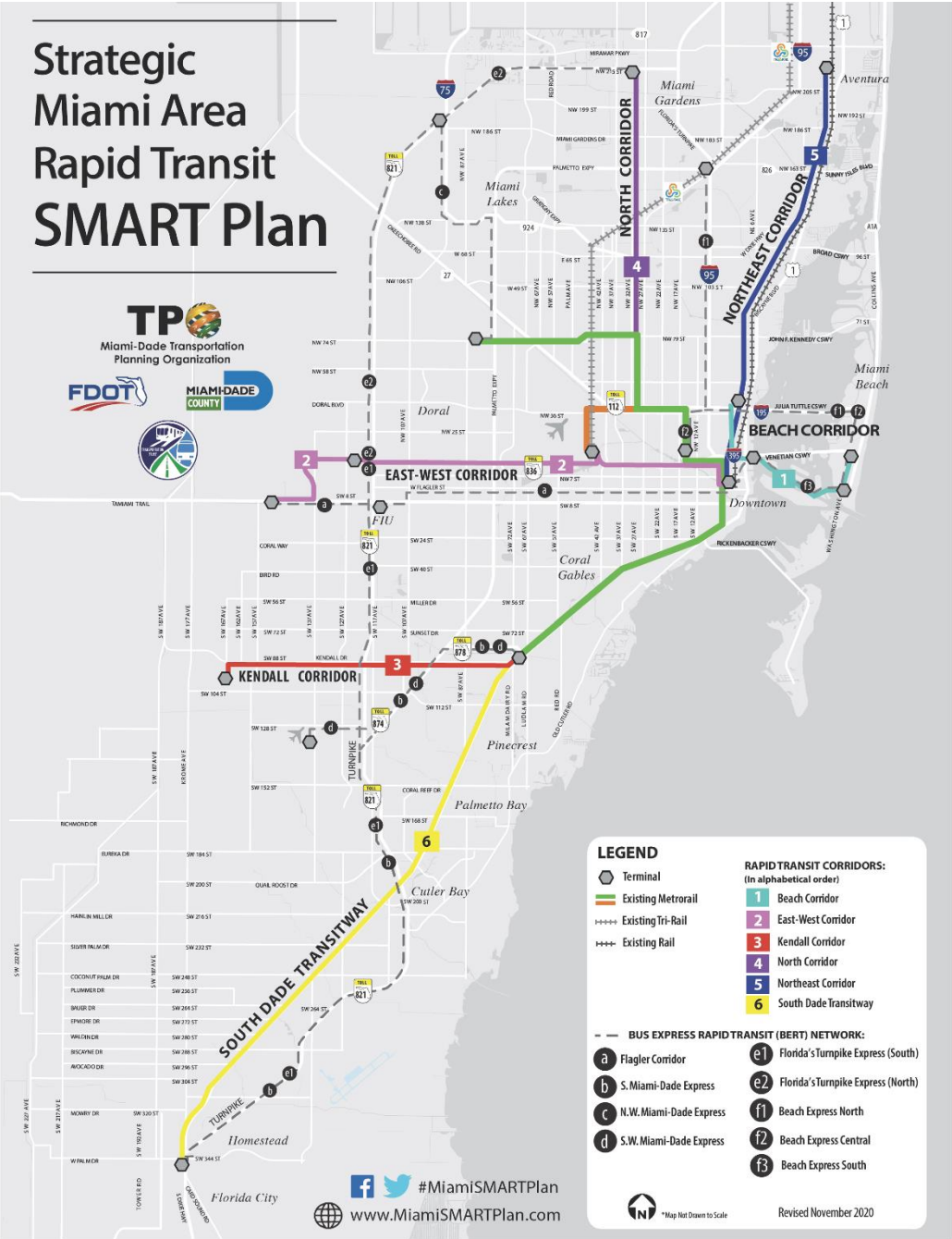




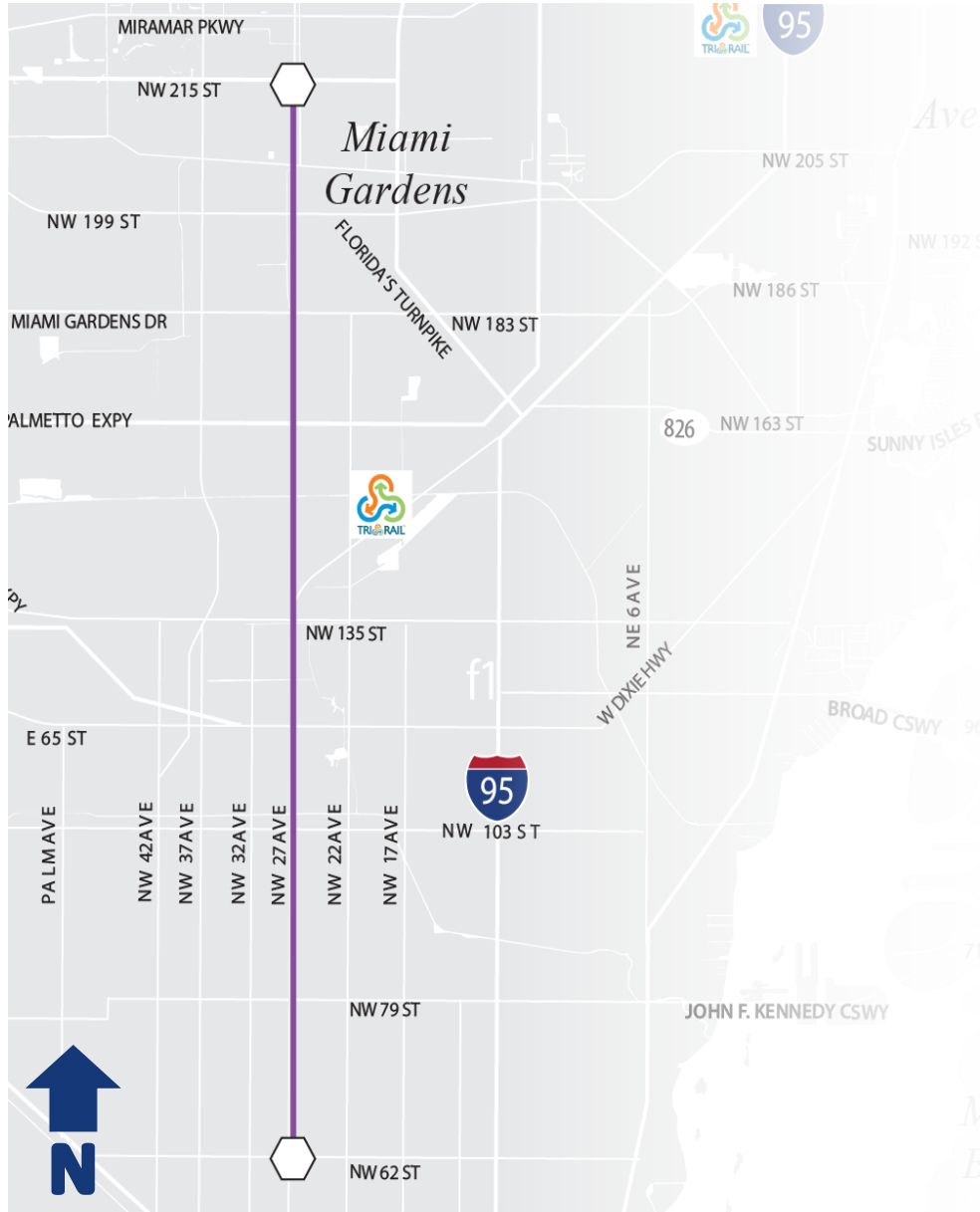


# Strategic Miami Area Rapid Transit (SMART) Plan FDOT-Led Corridors









- Study Limits: NW 27<sup>th</sup> Ave from NW 215<sup>th</sup> St to NW 62<sup>nd</sup> (Martin Luther King Jr Metrorail Station)
- Length: 10 Miles
- Unique Markets: Intercounty, colleges, special event venues

PD&E Study Results Summary Adopted LPA – Elevated Heavy Rail	
<b>Capital Cost Estimate*</b>	\$1.9 Billion
<b>Operations and Maintenance Cost Estimate (Annual)</b>	\$49.4 Million/yr.
<b>2022 Estimated New Transit Riders per Day</b>	7,500

\*2018 Dollars, includes right-of-way costs

\*PD&E Study on hold as of May, 2020, pending completion of DTPW RFP

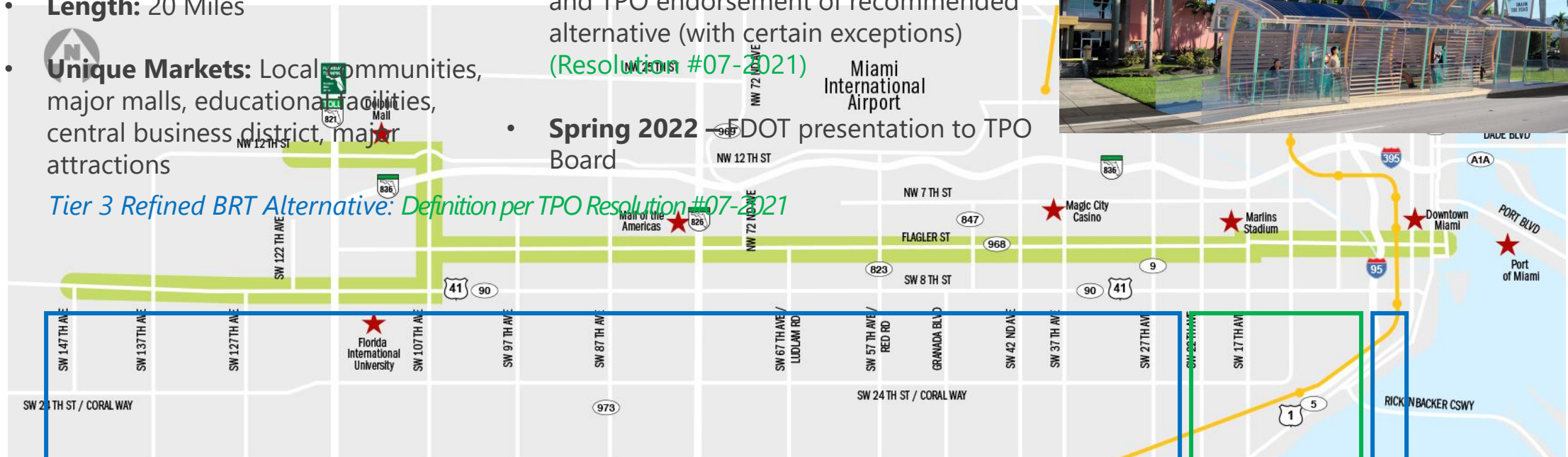


## Project Facts:

- Study Limits:** SR-968/Flagler Street from SR 821/HEFT to SR 5/US 1/Biscayne Blvd.
- Length:** 20 Miles
- Unique Markets:** Local communities, major malls, educational facilities, central business district, major attractions

## Project Status:

- 2019** – Business Access Transit BAT lanes identified as recommend alternative
- 2021** - Reversible Lane Analysis Completed and TPO endorsement of recommended alternative (with certain exceptions) (Resolution #07-2021)
- Spring 2022** – FDOT presentation to TPO Board



LEGEND | ● Flagler Street Corridor ★ Activity Center — Metrorail

Mixed Traffic Operation



Safety, Mobility,  
Innovation

Dedicated BAT Lanes



## Project Facts:

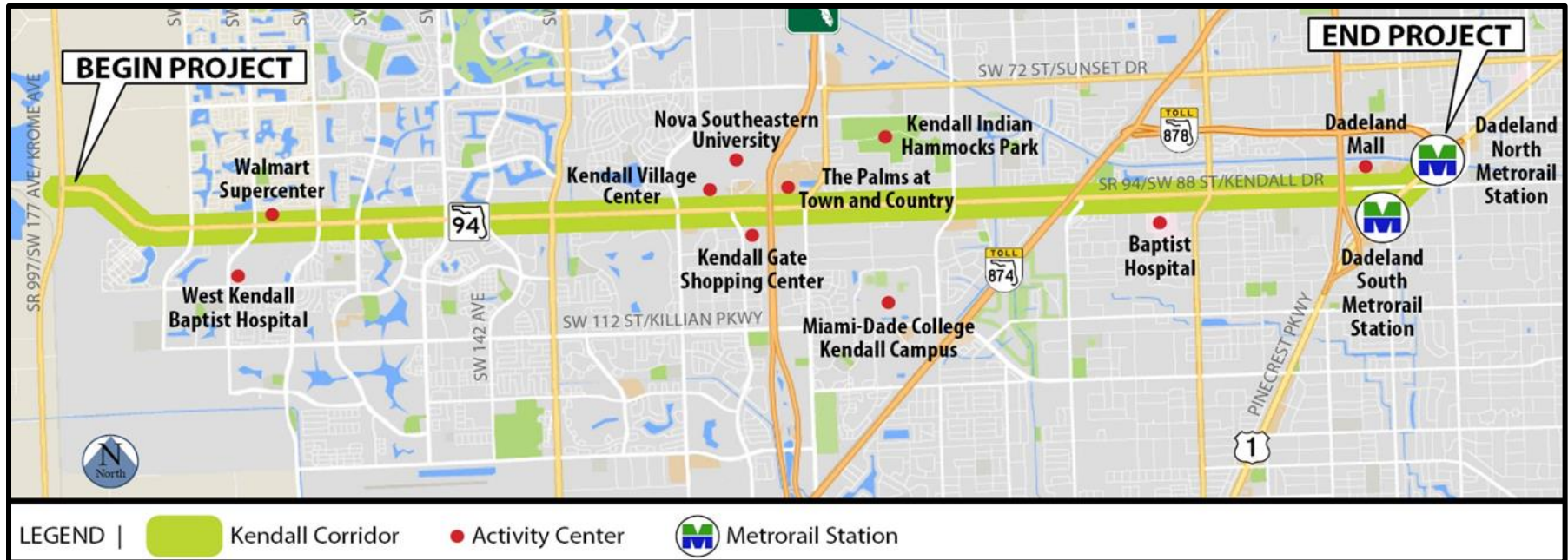
- **Study Limits:** SR-94/Kendall Drive/SW 88th Street from SR 997/Krome Avenue/SW 177th Avenue to Dadeland North Metrorail Station
- **Length:** 10 Miles
- **Unique Markets:** Local communities, major malls, hospitals

## Project Status:

- **Spring 2022-** FDOT presentation to TPO Board

## Next Steps:

- Selection of LPA (TBD)
- PD&E Completion (TBD)



*Bus on shoulder BOS segment on Julia Tuttle Causeway/ I-195*



### Project Status:

- **November 2021**- Executed Memorandum of Agreement (MOA) between FDOT and DTPW for bus on shoulder operations on Julia Tuttle Causeway
- **December 2021** – FDOT Interim Projects **Completed**
  - Includes improvements to outside shoulders of Julia Tuttle Causeway
- **December 2021**- Route 241/Tuttle Limited service started
- **December 2023** –Anticipated construction completion FDOT Ultimate project
  - Includes improvements to inside shoulders of Julia Tuttle Causeway



**ACHIEVING ZERO TAKES  
EVERYONE WORKING TOGETHER**

**TARGET**  
**ZERO**  
**FATALITIES & SERIOUS INJURIES**





## Questions

**Stacy L. Miller, P.E.**  
**District Secretary**  
**District Six**  
**Florida Department of Transportation**





# WEDNESDAY AFTERNOON SPEAKERS

**AILEEN BOUCLÉ**

Miami-Dade TPO

**EULOIS CLECKLEY**

Miami-Dade County DOT and Public Works

**STACY MILLER**

Florida DOT (FDOT)

**PATRICE GILLESPIE SMITH**

Friends of the Underline

**JAVIER BETANCOURT**

**Citizen Independent  
Transportation Trust**



Presented by  
GoTriangle and  
the NC Railroad Company



# 2022 REGIONAL LEADERSHIP TOUR

to South Florida



# RTA

REGIONAL  
**BUSINESS**  
LEADERSHIP

Presented by  
GoTriangle and  
the NC Railroad Company



# WEDNESDAY AFTERNOON SPEAKERS

**PATRICK GODDARD**

Brightline

**ALEXANDER ESPOSITO**

Circuit

**MATT HAGGMAN**

Miami-Dade Beacon Council



Presented by  
GoTriangle and  
the NC Railroad Company



# PATRICK GODDARD

Brightline



Presented by  
GoTriangle and  
the NC Railroad Company



A photograph of a Brightline train traveling on an elevated track through a city. The train is white with green and yellow accents and features the Brightline logo. The background consists of several modern high-rise buildings with glass facades. The sky is clear and blue.

# *brightline*<sup>®</sup>

## RTA Regional Leadership Tour

Patrick Goddard, President  
March 30, 2022

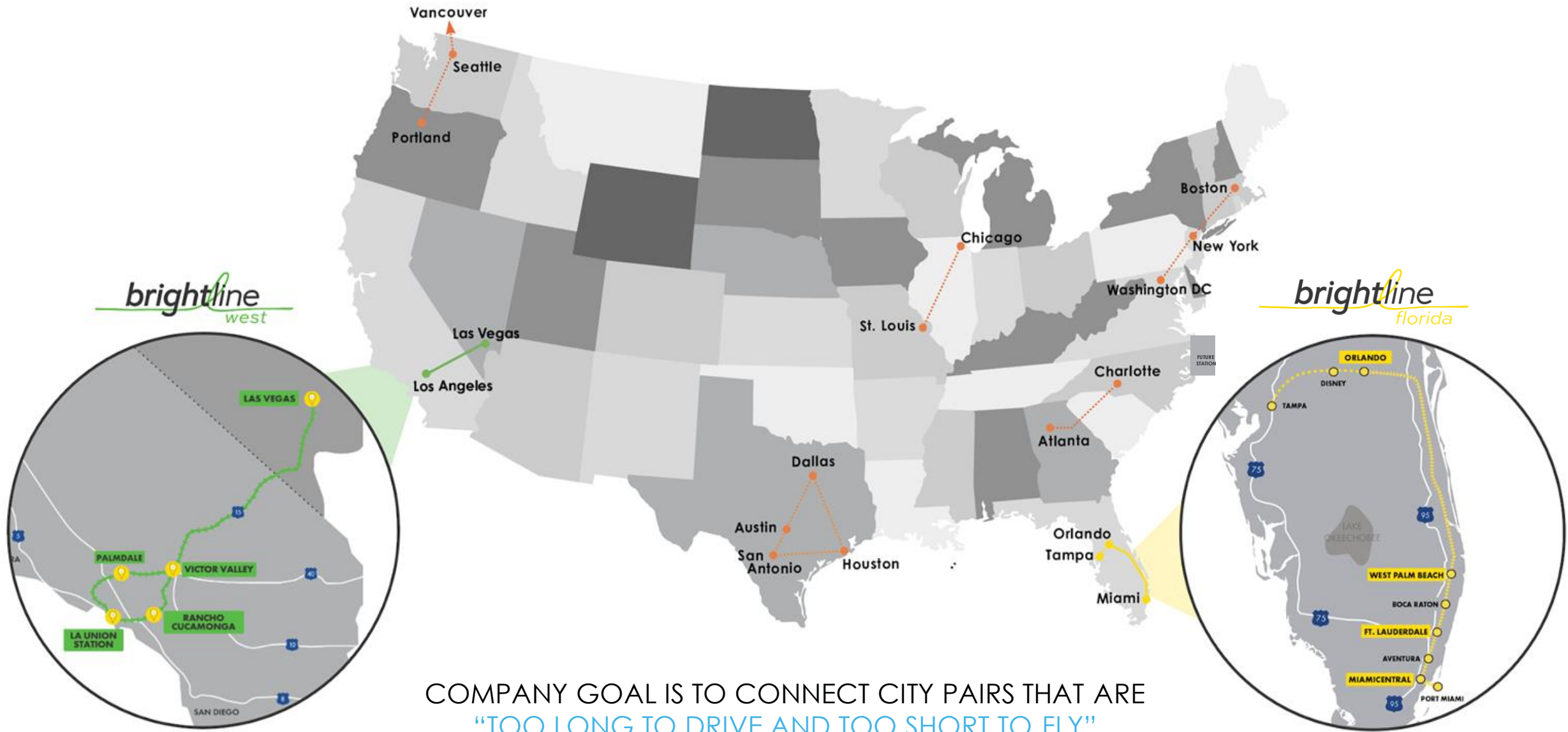


**We are here to challenge  
the transportation status quo and  
reimagine what it means to travel  
by train in America.**





## Bringing modern eco-friendly intercity rail to the U.S.



COMPANY GOAL IS TO CONNECT CITY PAIRS THAT ARE  
"TOO LONG TO DRIVE AND TOO SHORT TO FLY"

## Brightline's Major Milestones

- **Three completed & operational stations:**  
MiamiCentral, Fort Lauderdale and West Palm Beach
- **Brightline South Florida operations:**  
Resumed full operations November 8  
Recently hired 200+ new teammates
- **Launched Brightline+,** door-to-door mobility solution
- **Building two additional In-Line stations:**  
Aventura and Boca Raton; PortMiami planned
- **Miami to OIA connection on track for substantial completion by late 2022**
- **Extension to Tampa in development**

## Orlando Extension

**\$4.7B**

construction cost

**73%**

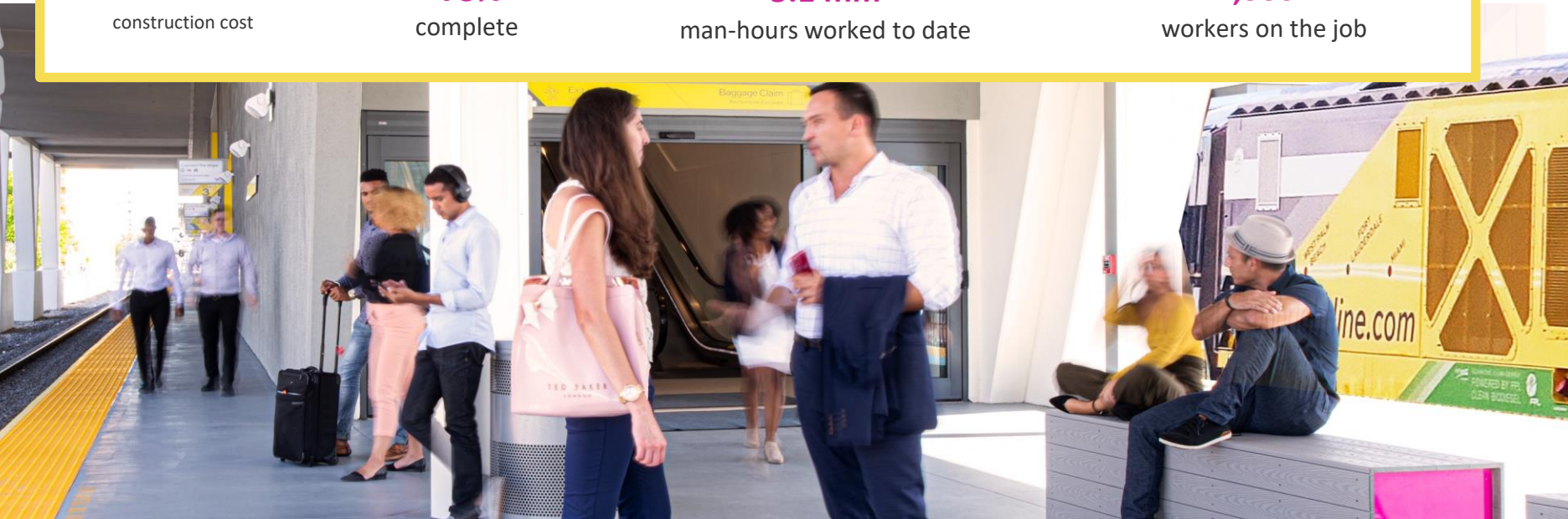
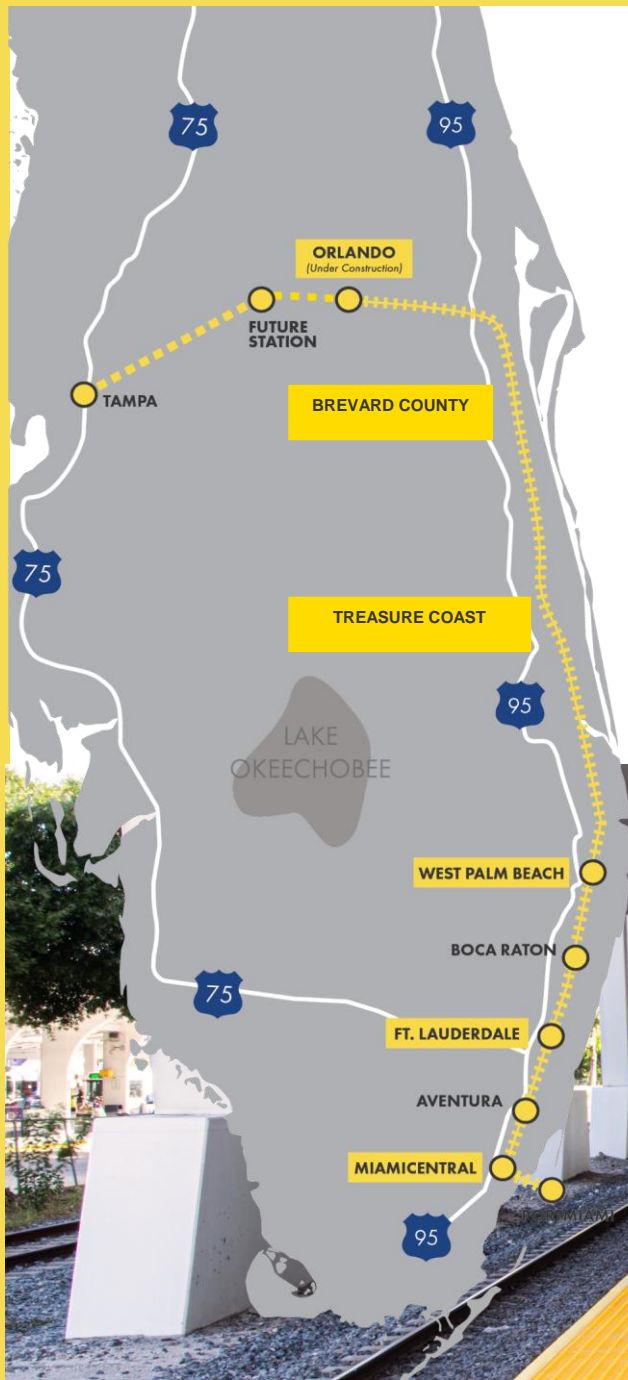
complete

**5.1 mm**

man-hours worked to date

**1,300+**

workers on the job





# Building smarter and more prosperous communities

As urban life evolves and the demand for smarter, more efficient cities becomes higher, mobility networks like Brightline play a key role in the long-term prosperity of the areas they serve.



Boost of private capital toward infrastructure development



New & expanded job markets



Greater connectivity to economic centers



Increased real estate value through Transit Oriented Development

## FLAGSHIP STATIONS



MIAMICENTRAL



ORLANDO INTERNATIONAL AIRPORT

## IN-LINE STATIONS



AVENTURA



FORT LAUDERDALE



BOCA RATON



WEST PALM BEACH

# Brightline

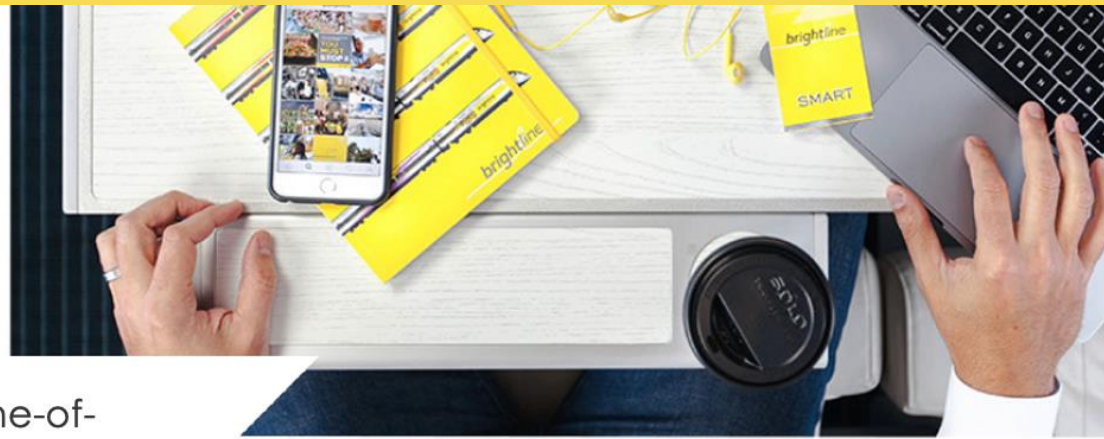
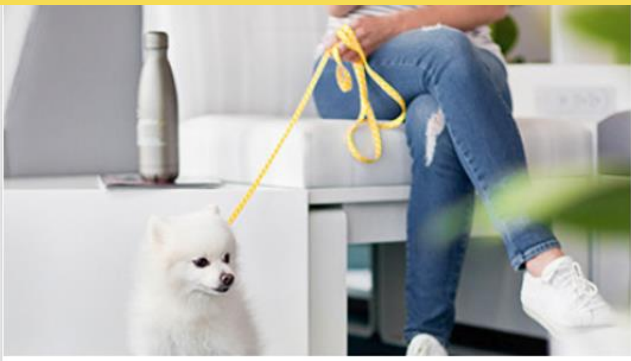


Our new door-to-door service, powered by our app and supported by a new fleet of Brightline branded vehicles.

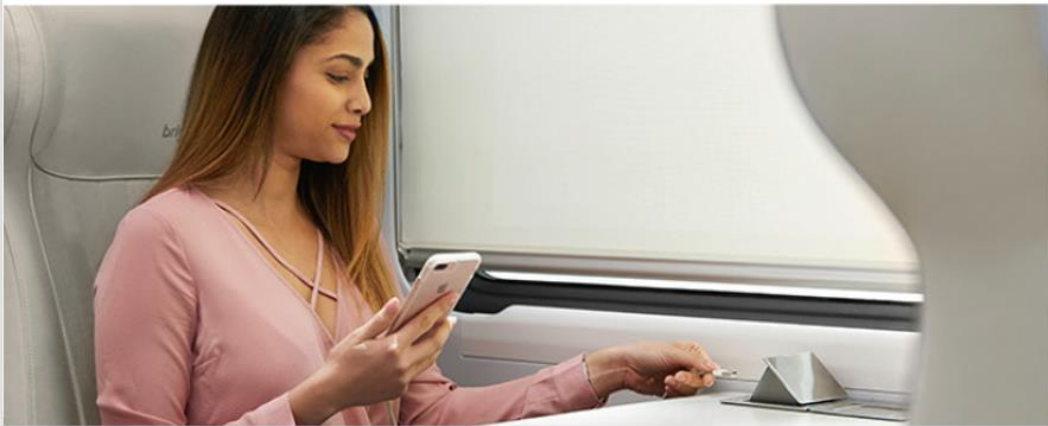
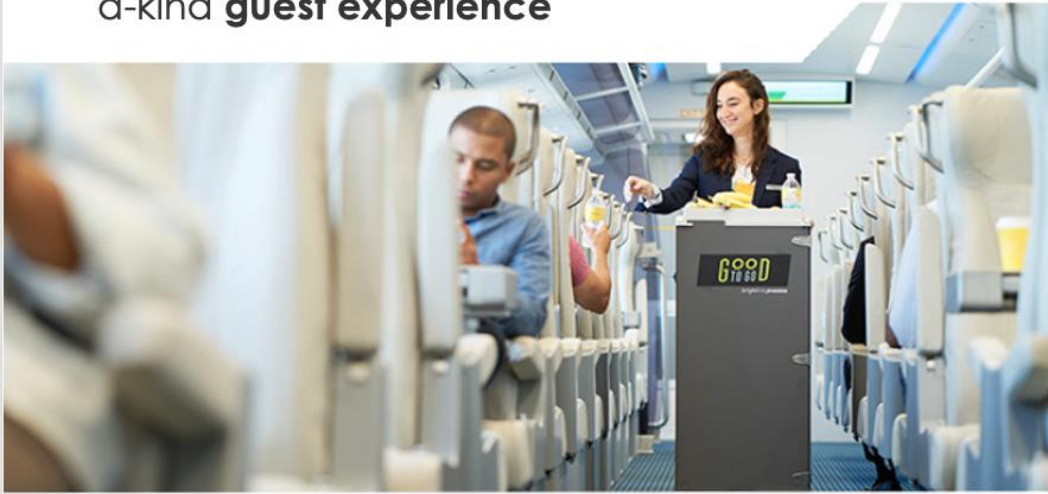
*brightline*







More than just **a ride**, it's a one-of-a-kind **guest experience**





## Phase 2: On Track to Orlando



**brightline**



Phase 2: Ongoing Work  
SR 528 Corridor - Orlando to Cocoa



## Creating economic benefits to the nation's 3<sup>rd</sup> largest state

**\$6.4  
Billion**

Direct impact to Florida's  
economy over 8-year construction  
& implementation

**\$3.5  
Billion**

Added to Florida's  
GDP through 2021

**\$2.4  
Billion**

In labor income

**\$653  
Millio  
n**

In federal, state, and local  
government tax revenue

**10,000  
+**

Jobs created per year  
through rail-line  
construction

**2,000  
+**

Jobs created post  
rail-line  
construction

**3  
Million**

Cars removed from  
roadways annually

**160,000  
Metric  
Tons**

Of CO2 removed  
annually

SOURCE: The Washington Economics Group was retained to provide a comprehensive, economic impact analysis study, utilizing widely accepted methodologies and specific and accurate input of data, which encompasses the construction of the rail infrastructure and Transit-Oriented Development.





Thank You

# ALEXANDER ESPOSITO

## Circuit



**RTA** REGIONAL  
BUSINESS  
LEADERSHIP

  
**2022**  
**REGIONAL LEADERSHIP TOUR**  
to South Florida

Presented by  
GoTriangle and  
the NC Railroad Company



# CIRCUIT

## On-Demand, EV Mobility Solutions

That Change How Cities Move

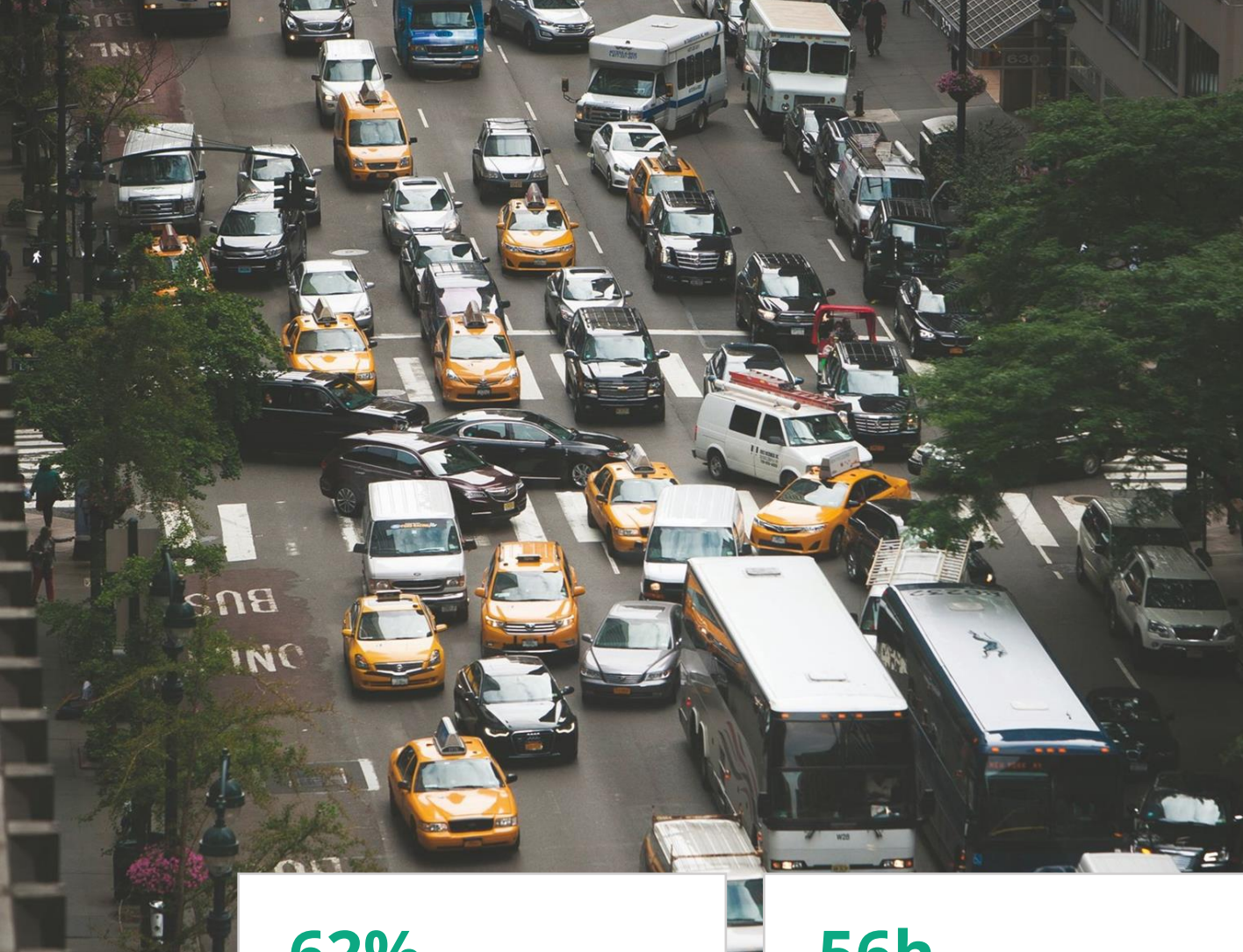


Our Mission

**Transforming**  
short distance  
transportation with **tech-  
enabled, shared,  
EV mobility solutions.**







**Traffic** is harming  
our communities,  
environment and  
quality of life

**62%** of GHG emissions

produced by cities, mainly due  
to the transportation sector  
(UN)

**56h** average time

US commuters spend in  
traffic/year (CNN)

**\$305bn**/year US

cost of congestion (INRI) as  
cities grow faster than their  
infrastructure



# Short Distance Trips are a Big Problem



## TNCs ( Uber & Lyft)

160% increase in urban traffic (Schaller)  
40% increase in costs YOY (NYTimes)



## Antiquated Local Transit

Declining bus ridership since 2013 (NYTimes)  
Indirect for Riders, Expensive for Providers

**1/3** of all vehicle trips (**150bn/yr**)  
in the US are 2 miles or less (USDOT)



## Last-mile deliveries

53% of delivery cost is the last mile  
Increasing Traffic and Pollution (BI)



## Personal cars

76% of americans still drive  
themselves to work (Citylab)

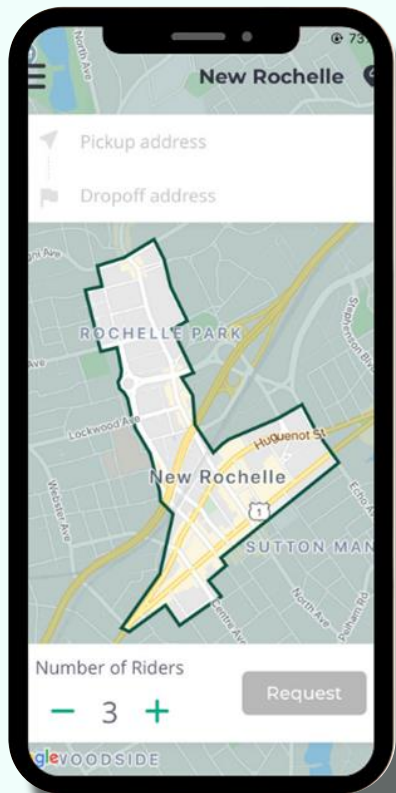




Our Solution

# Helping to solve **the last-mile problem** that's driving the urban transportation crisis

We work with cities and private companies to build and deploy on-demand, electric shuttle solutions.



## Shared, On-Demand Shuttle Services

- Shared rides in geo-fenced coverage areas
- On-demand ux with quality control, jobs, traffic reduction

## Turnkey Solutions for B2B & B2G Partners

- App, Vehicles, W2 Drivers, Insurance, Management and Data
- Solutions deployed in 60 days or less

## Greener, Cheaper, Easier

- 100% Electric
- 5X less to operate than buses or TNCs
- Accessible and Free/Low Cost for riders

# The First/Last Mile

Balancing Rider Preferences with City Needs



**CONNECT & COMPLEMENT**  
Rides to Trains and Bus Lines



**SHARED RIDES**  
On-Demand with Less VMTs



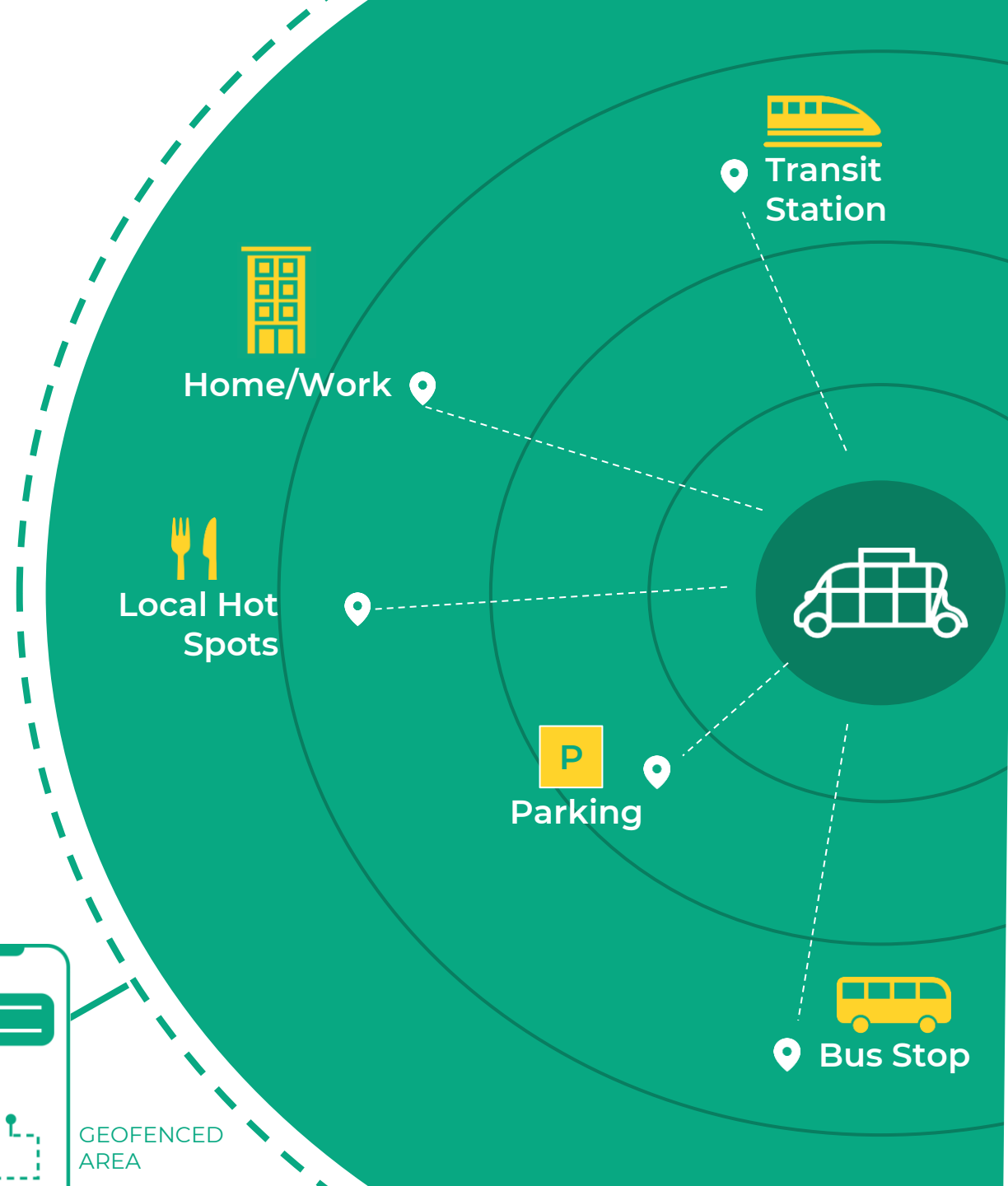
**PARK ONCE**  
30% of Urban Traffic caused by looking for parking.



**SUSTAINABILITY**  
100% Electric



GEOFENCED  
AREA







# Cities, Agencies, Private Partners

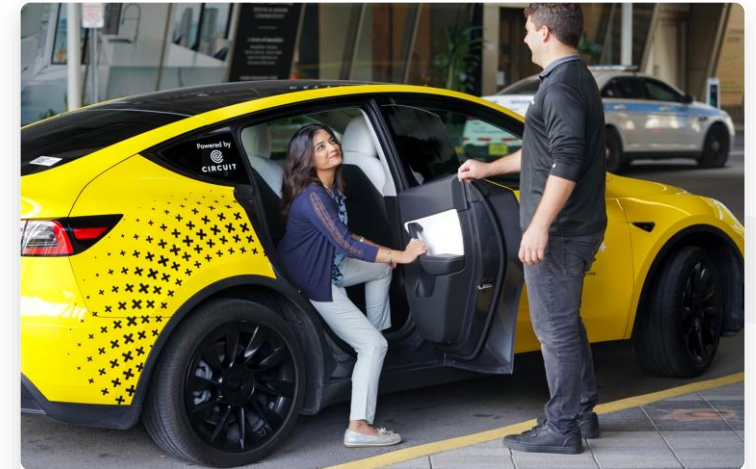
## PPP Service Contracts



**Smarter, greener, cheaper  
than traditional options**



**Combating congestion,  
connecting with parking,  
reducing VMTs and GHGs**



**First-mile/last-mile  
connections**



# Subsidized by Advertising Partners

Brand Engagement + Outdoor Media



## Award Winning Campaigns

Capturing Rider Experience



## 360 Degree Marketing

Outdoor Media, Experiential,  
Digital Marketing



## Local Businesses, Local Targeting

Using App Data to Drive Returns

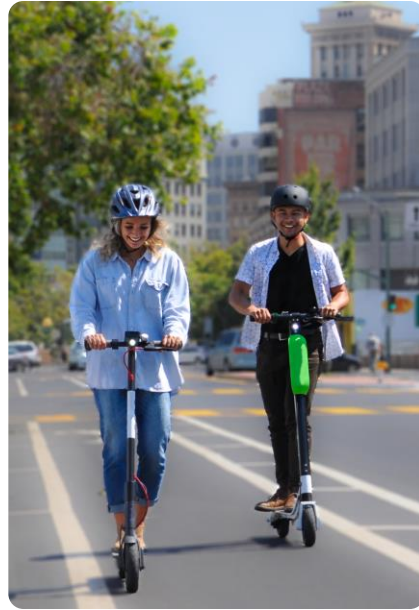






# People Like Options

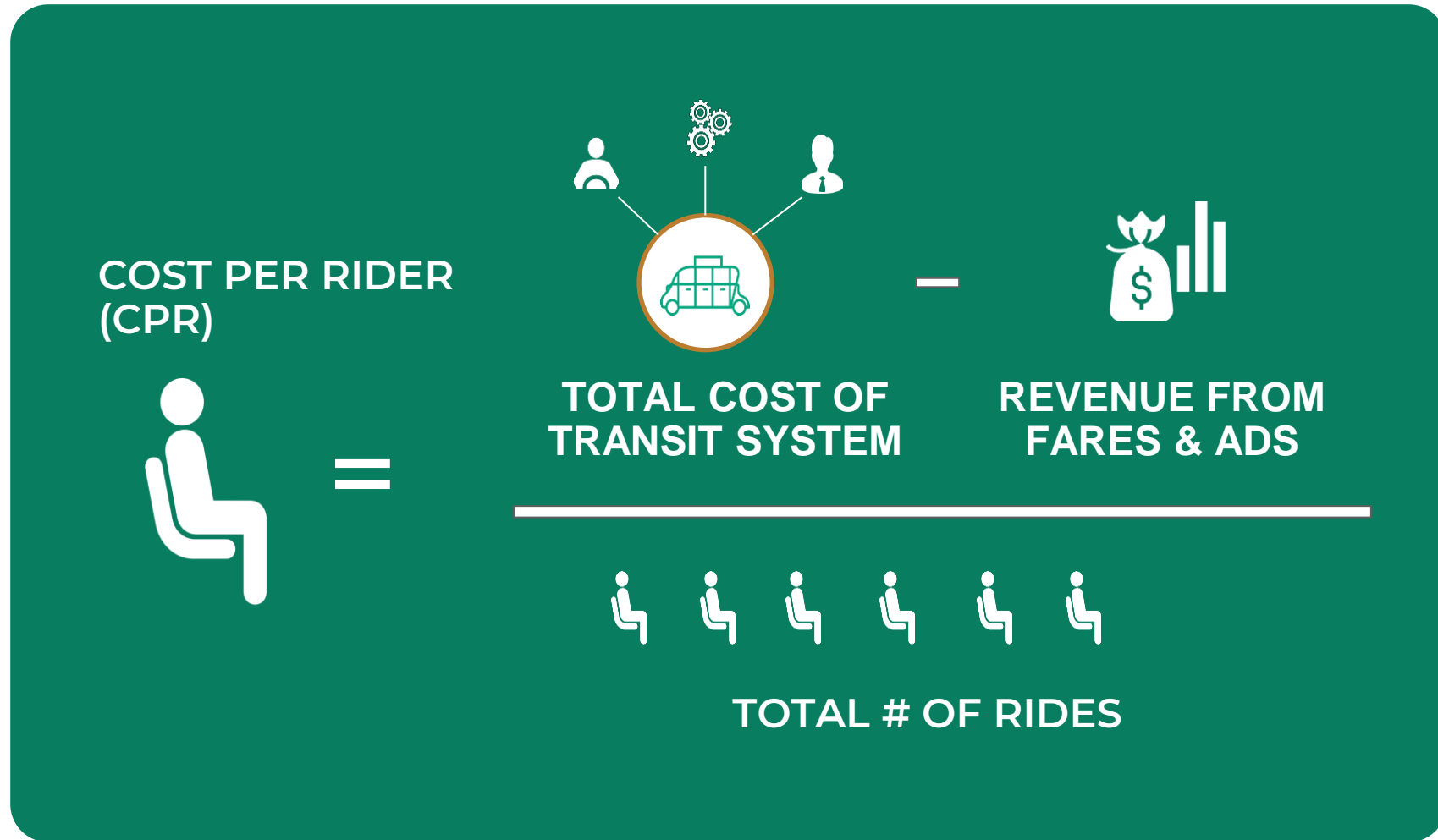
Many Ways to Move 2 Miles





# More Riders Reduce Costs

Increase Ridership, Reduce Cost Per Rider







# Circuit City Programs in FL

## Market Highlights

### HOLLYWOOD BEACH

- 15k riders/month
- 30% Savings / 80% CPR Savings
- Over 1500 Grocery Boxes delivered during Covid



### POMPANO BEACH

- 2000+ riders/car/Month
- \$2.28 Cost Per Rider (all In)
- Lowest CPR of any known on-demand system in US



### WEST PALM BEACH

- WPB DDA + City + Brightline + Ben + Local Advertisers
- Ridership growing over 15%/month in 2022



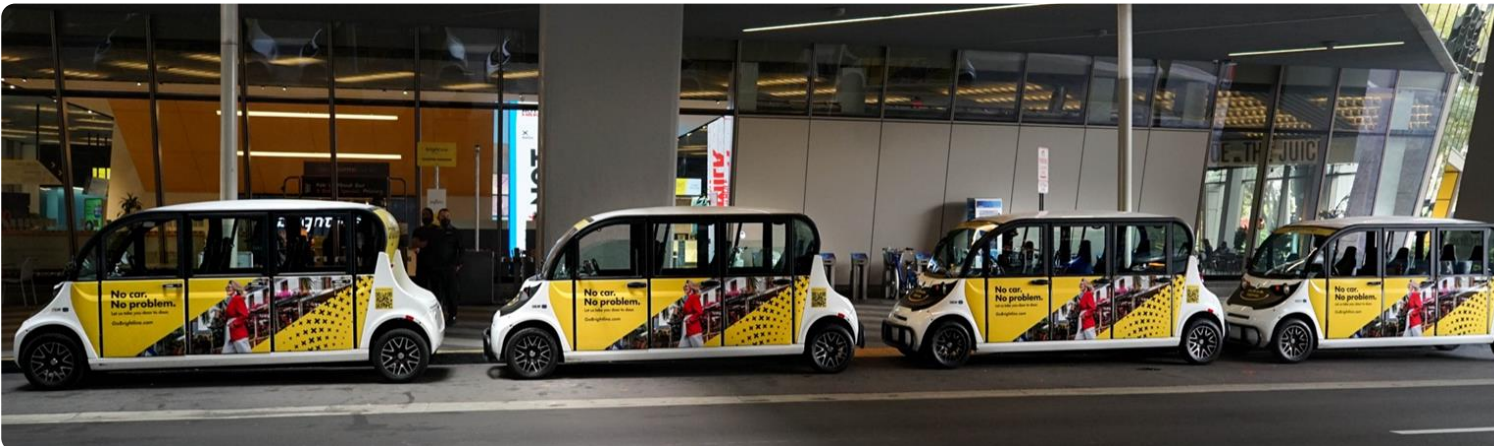
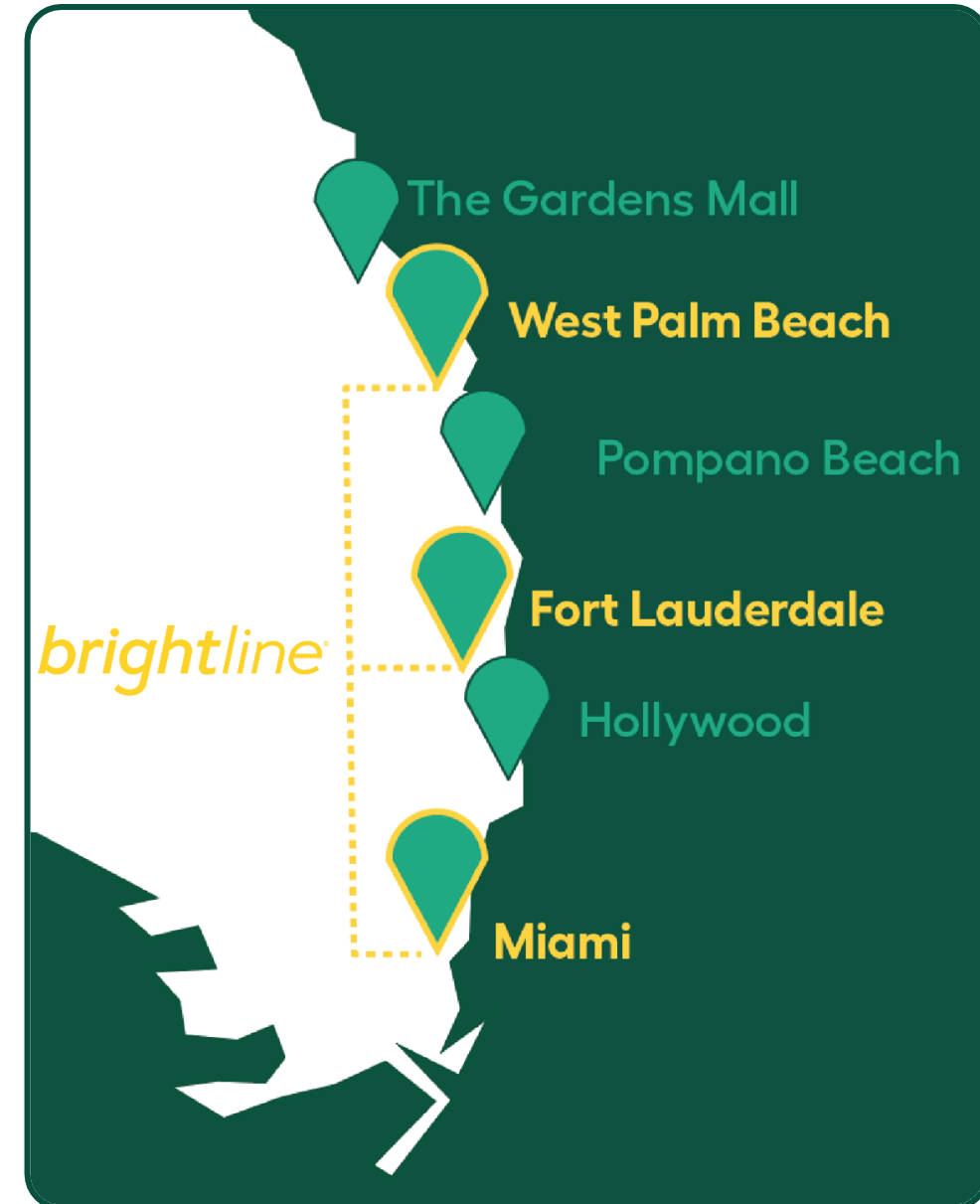
# Connecting the Region

with Brightline+

***brightline***

## BRIGHTLINE+

- Miami, Ft Lauderdale, West Palm Beach
- GEMs, Teslas, Vans
- End-to-End Customer Experience
- Riders / Car / Month







# Making an Impact

## For Multiple Stakeholders



### The Environment

- 5M Rides, 0 Gas
- Reducing Congestion & Emissions with shared rides
- 520 Metric Tons of CO2 Avoided in 2021



### Local Economies

- Local Jobs - W2, Paid, Trained Employees
- Promoting Local Businesses
- Data for Planning
- Low-Cost Options for Cities
- For every \$1 a City spends on transportation it can expect a \$5 return in economic activity - APTA



### Access & Mobility

- < \$5 Fare for all
- Connections for commuters, LMI neighborhoods.
- ADA options available
- Access for unbanked users
- Reducing transit deserts, commuting costs and times



Thank You!  
Let's **Connect**



[Alex@ridecircuit.com](mailto:Alex@ridecircuit.com)

516.446.8513



#### Social Handles

Ridecircuit

@Ride\_Circuit





# MATT HAGGMAN

## Miami-Dade Beacon Council



**RTA** REGIONAL  
BUSINESS  
LEADERSHIP

  
**2022**  
**REGIONAL LEADERSHIP TOUR**  
to South Florida

Presented by  
GoTriangle and  
the NC Railroad Company



# WEDNESDAY AFTERNOON SPEAKERS

**PATRICK GODDARD**

Brightline

**ALEXANDER ESPOSITO**

Circuit

**MATT HAGGMAN**

Miami-Dade Beacon Council



Presented by  
GoTriangle and  
the NC Railroad Company



## **WEDNESDAY PM FIELD VISIT**

**ALI SOULE**  
Brightline

**JONATHAN HOPKINS**  
Brightline

**Dr. NANCY GASSMAN**  
City of Fort Lauderdale

**Dr. JENNIFER JURADO**  
Broward County

**JENNI MOREJON**  
Fort Lauderdale Downtown  
Development Authority



Presented by  
GoTriangle and  
the NC Railroad Company



# 2022 REGIONAL LEADERSHIP TOUR

to South Florida



# RTA

REGIONAL  
**BUSINESS**  
LEADERSHIP

Presented by  
GoTriangle and  
the NC Railroad Company