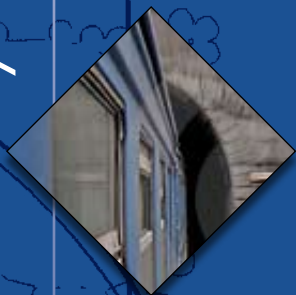


State of Mobility in the Triangle

# 2007 Annual Report



**Regional  
Transportation  
Alliance**

*Let's get moving!™*



**The Alliance is a regional business leadership group that focuses on relieving traffic congestion and enhancing mobility.**

## ***Alliance members and partners,***

The many successes of the past year have been significant for transportation in the Triangle region. The opening of 14 miles of Interstate/NC 540 in 2007 was a clear victory for mobility in Wake County and indeed much of central and eastern North Carolina. Approval of the I-40 Cary/Raleigh widening project in the draft state TIP means that Triangle area motorists will receive relief from congestion on the Triangle's main street years earlier than expected. Thanks to the approval of the Triangle Expressway turnpike by both regional metropolitan planning organizations as well as the Turnpike Authority itself, our region now stands on the cusp of a new era of transportation for both the Triangle and North Carolina. Additionally, the Special Transit Advisory Commission honed in on exciting possibilities for both bus and rail transit in our extended region; and, to top it off, RDU Airport welcomed three new carriers in a single year – a record for our hometown international airport.

Even with our ongoing successes, we recognize that traffic congestion challenges can take decades to solve. We must constantly keep our foot on the improvements accelerator if we want to avoid any unexpected braking in our economic vitality. Mobility problems don't take care of themselves, and transportation projects take much too long for us to risk our future quality of life on inadequate advocacy for needed infrastructure improvements.

With more than 110 leading business members and 22 member chambers, our organization continues to provide the unique regional business leadership that our transportation challenges require and the Triangle deserves. With your help, the Regional Transportation Alliance will continue to focus on identifying, promoting, and accelerating mobility solutions for the region.

Thank you for your support and membership.



***Rusine Mitchell-Sinclair***

2007-08 Chair, Regional Transportation Alliance

## **Alliance Senior Leadership**



(From left to right) **Alliance chair:** Rusine Mitchell-Sinclair; **Alliance Vice-chairs:** Rick Weddle, Research Triangle Foundation; Lynne Garrison, Blue Cross and Blue Shield of North Carolina; Jim Captain, xxx; Marty Clayton, Progress Energy; Fred Burchett, PE, Kimley-Horn and Associates; **Alliance Executive Director:** Joe Milazzo II, PE

# Accomplishments and Priorities

## ***The Alliance achieved several organizational successes during 2007, including:***

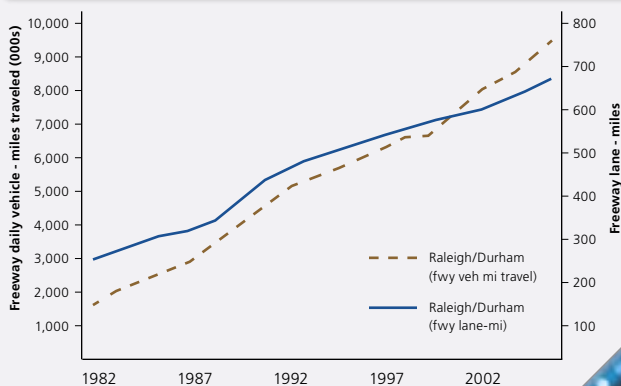
- » The Regional Transportation Alliance, led by the 2006-07 Alliance chairs council, is pleased with the region's progress on a variety of mobility issues.
- » "Triangle Expressway" turnpike approved by Capital Area MPO and Durham-Chapel Hill-Carrboro MPO
- » NC Turnpike Authority approved the turnpike project in November which will make it the first-ever cashless start-up mainline toll facility in the US
- » Spearheaded the successful drive to accelerate the widening to six lanes of I-40 between Cary and Raleigh in the draft Transportation Improvement Program
- » Championed regionwide support for turnpike gap funding in 2007
- » Encouraged and supported the creation of the Special Transit Advisory Commission that is reviewing regional transit options.
- » Helped welcome ExpressJet, United Airlines and Midwest Connect as the newest carriers to RDU—the most new carriers in a calendar year.
- » Sustained the Triangle Mobility Action Partnership (Tri-MAP) discussion forum.
- » Hosted Transportation Academy X in November 2007, featuring the Mayor and City Engineer of Carmel, Indiana, the home of approximately 50 roundabout intersections
- » Coordinated an ongoing regional wayfinding initiative with partners from across the extended Triangle.
- » Honored the 2007 regional mobility award winners [video link]

## ***Our top priorities in 2008 include:***

- » Ongoing freeway priorities
- » Support the work of the special transit advisory commission and the potential to jumpstart regional transit in the Triangle
- » Support the work of the 21st Century Transportation Commission
- » Continue to support the efforts of Raleigh-Durham Airport Authority to attract new carriers, destinations, and capacity to RDU.

### **INCREASE IN FREEWAY SUPPLY AND DEMAND**

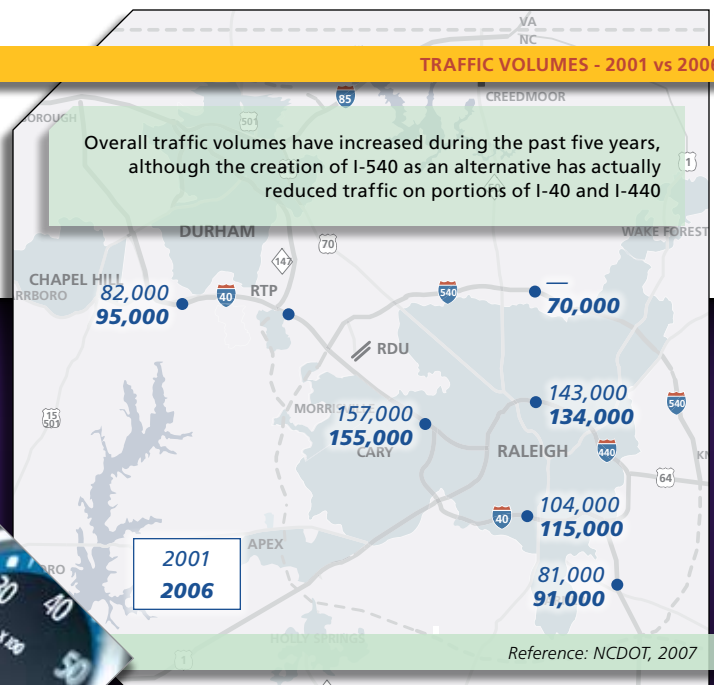
The rate of increase in freeway travel demand (vehicle miles traveled) continues to outpace the rate of increase in freeway supply (lane miles)"



Reference: Texas Transportation Institute, 2007

### **TRAFFIC VOLUMES - 2001 vs 2006**

Overall traffic volumes have increased during the past five years, although the creation of I-540 as an alternative has actually reduced traffic on portions of I-40 and I-440



Reference: NCDOT, 2007

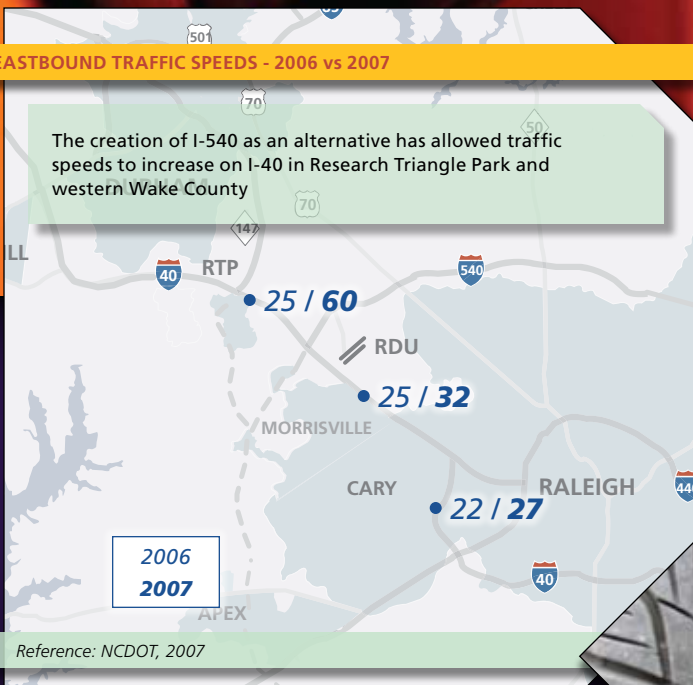


# Our region now stands on the cusp of a new era of transportation for both the Triangle and North Carolina.

—Alliance Chair Rusine Mitchell-Sinclair

## EASTBOUND TRAFFIC SPEEDS - 2006 vs 2007

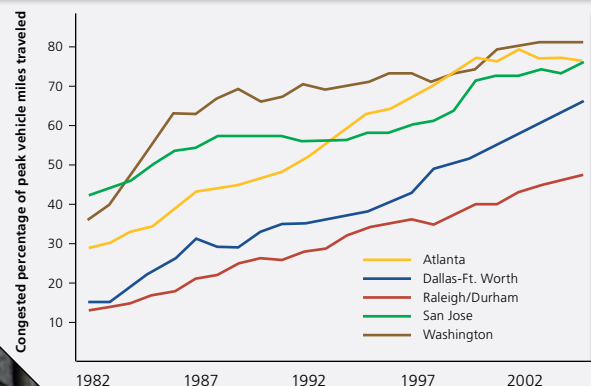
The creation of I-540 as an alternative has allowed traffic speeds to increase on I-40 in Research Triangle Park and western Wake County



Reference: NCDOT, 2007

## CONGESTED TRAVEL BY PEAK VEHICLE MILES TRAVELED

Congested travel in other cities – by peak vehicle miles traveled  
"The percentage of peak travel under congested conditions continues to grow in the Triangle, although our region's level is lower than peer cities"



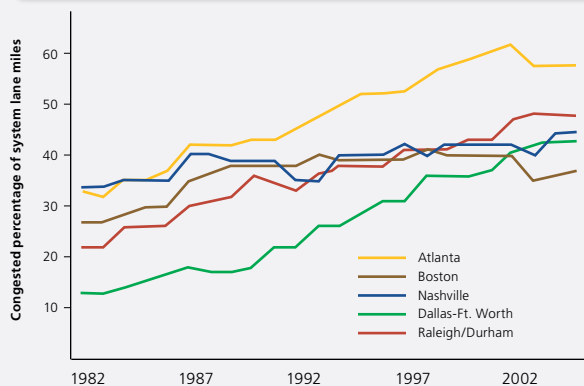
Reference: Texas Transportation Institute, 2007

**Our region now stands on the cusp of a new era of transportation for both the Triangle and North Carolina.**

—Alliance Vice Chair Lynne Garrison

#### CONGESTED TRAVEL BY SYSTEM LANE MILES

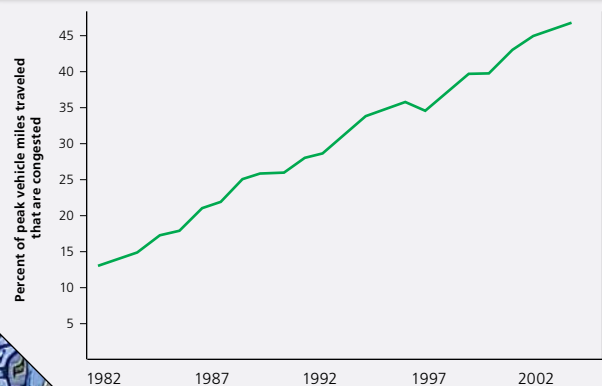
The percentage of system lane-miles under congested conditions is actually higher in the Triangle than cities such as Nashville, Dallas, and Boston



Reference: Texas Transportation Institute, 2007

#### CONGESTED TRAVEL???

The percent of peak period travel under congested conditions in the Triangle has more than tripled during the past 25 years



Reference: Texas Transportation Institute, 2007



# Alliance Members

as of 1.01.08

## Leadership Team

Members listed on back panel

## Alliance Gold

The Catevo Group  
Cisco Systems, Inc.  
Fairway Outdoor Advertising  
GlaxoSmithKline  
Greater Raleigh Chamber of Commerce  
IBM Corporation  
Progress Energy  
Research Triangle Foundation of North Carolina  
Time Warner Cable

## Alliance Silver

Blue Cross and Blue Shield of North Carolina  
Capitol Broadcasting Co., Inc.  
Cherokee Investment Partners LLC  
Credit Suisse  
Duke Energy  
First Citizens Bank  
Greene Resources, Inc.  
KB Home  
Kimley-Horn & Associates, Inc.  
Lenovo Group  
Logistics  
Quintiles Transnational Corp.  
Rella: Cowan Advertising  
RSM McGladrey, Inc./ McGladrey & Pullen, LLP

## Alliance Corporate PLUS

Blanchard, Miller, Lewis & Styers, PA  
Branch Banking & Trust Co.  
Carolina Asphalt Pavement Association, Inc.  
Dancing Elephants Achievement Group  
Fidelity Investments  
Kennedy Covington Lobdell & Hickman, LLP  
LORD Corporation  
Martin Marietta Materials, Inc.  
Martin/Alexiou/Bryson, PLLC  
Poyner & Spruill LLP Attorneys-at-Law  
RBC Centura  
Talecris Biotherapeutics  
Tekelec  
The York Companies

## Alliance Corporate

Accent Imaging, Inc.  
Allen Tate Realtors  
Altec Industries, Inc.  
American Labor / Durham Interneighborhood Council  
ARCADIS  
AT&T North Carolina  
Blalock Paving, Inc.  
*Boom! Magazine*  
Carolina Sunrock LLC  
Chas. H. Sells, Inc.  
Citigroup Global Markets, Inc.  
Coastal Federal Credit Union  
Corporate Express Office Products  
Craftsmanship Unlimited  
D. Miller & Associates, PA  
Duke University  
Earth Tech of NC, Inc.  
East West Partners  
Eisai, Inc.  
Enterprise Rent-A-Car  
Excel Moving & Storage, Inc. - Allied Van Lines  
ExpressJet Airlines  
Eydo Strategic Communications  
Fountainworks  
Greater Raleigh Convention and Visitors Bureau  
Harris Wholesale, Inc.  
Highwoods Properties, Inc.  
HNTB North Carolina, PC  
Initial Tropical Plants, Inc.  
James Lee Witt Associates  
The John R. McAdams Co., Inc.  
KCI Technologies, Inc.  
Keystone Corp.  
Lichtin Corporation  
Little  
Manpower  
MCNC  
MeadWestvaco Corp.  
Merck & Co., Inc.  
Mulkey Engineers & Consultants  
The News & Observer Publishing Co.  
North Carolina Central University  
North Carolina Railroad Company  
North Carolina State University  
Paragon Commercial Bank  
Parsons  
PB Americas, Inc.  
PBS & J

Pearce Brinkley Cease + Lee - Architects

Pierce Group Benefits, LLC  
Plaza Associates, Inc.  
Poe Center  
Powell Properties, Inc.  
*Raleigh Downtowner*  
*Raleigh Metro Magazine*  
Raleigh-Durham Airport Authority  
Ramey Kemp & Associates, Inc.  
Red Hat Software  
Rex Healthcare  
Rising Sun Pools & Spas, Inc.  
SAS  
SEPI Engineering Group, Inc.  
SRI Surgical, Inc.  
Stantec Consulting Services, Inc.  
Stewart Engineering, Inc.  
Storr Office Environments, Inc.  
Toll Brothers  
Tri Properties, Inc.  
Triangle Commercial Real Estate  
The Triangle Community Coalition  
Triangle United Way  
TruGreen Landcare  
UNC Chapel Hill  
URS Corporation - North Carolina  
Wachovia Bank, NA  
Wake Technical Community College  
WakeMed Health & Hospitals  
Ward and Smith, P.A.  
Watson Electrical Construction Co. LLC  
Wetherill Engineering  
Wilbur Smith Associate

## Gold Member Chambers

Cary Chamber of Commerce  
Chapel Hill-Carrboro Chamber of Commerce  
Greater Durham Chamber of Commerce  
Greater Raleigh Chamber of Commerce

## Silver Member Chambers

Angier Chamber of Commerce  
Apex Chamber of Commerce  
Benson Area Chamber of Commerce  
Franklin County Chamber of Commerce

Fuquay-Varina Area Chamber of Commerce  
Garner Chamber of Commerce  
Greater Smithfield-Selma Area Chamber of Commerce  
Hillsborough Chamber of Commerce  
Holly Springs Chamber of Commerce  
Knightdale Chamber of Commerce  
Morrisville Chamber of Commerce  
Rolesville Area Chamber of Commerce  
Roxboro Area Chamber of Commerce  
Sanford Area Chamber of Commerce  
Wake Forest Chamber of Commerce  
Wayne County Chamber of Commerce  
Wendell Chamber of Commerce  
Zebulon Chamber of Commerce

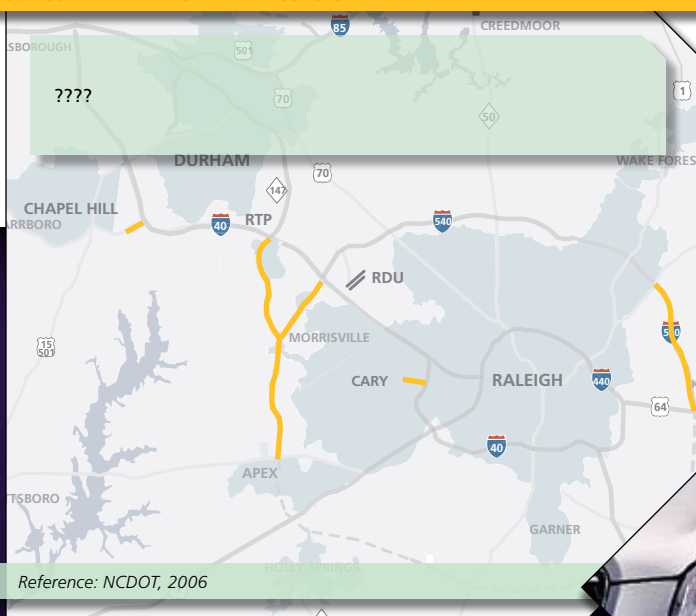
## Regional Public Affiliates

Capital Area Metropolitan Planning Organization  
Durham-Chapel Hill-Carrboro Metropolitan Planning Organization  
Triangle Transit Authority

## Regional and Statewide Partners

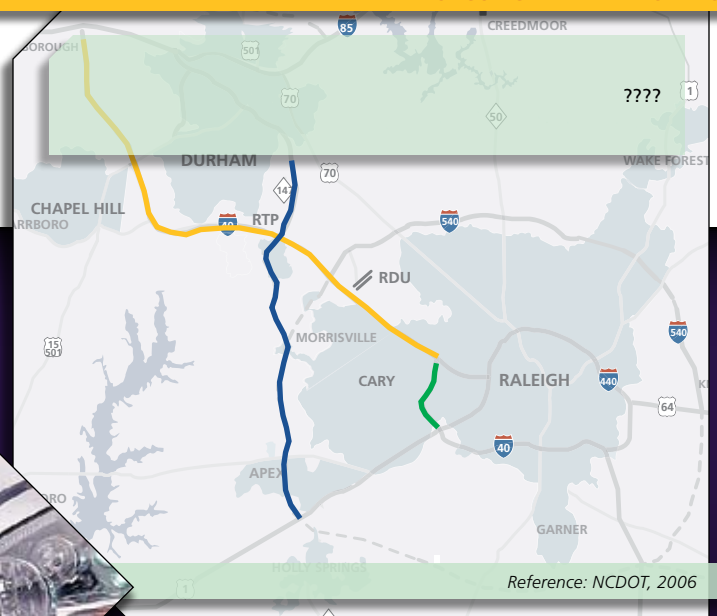
NC Go!  
North Carolina Metropolitan Coalition  
Research Triangle Regional Partnership  
SmartCommute  
Triangle Council of Governments  
Triangle Tomorrow

## 2007 COMPLETED HIGHWAY PROJECTS



Reference: NCDOT, 2006

## ONGOING FREEWAY PRIORITIES



Reference: NCDOT, 2006

## Gold Members



## Silver Members

**Blue Cross and Blue Shield  
of North Carolina**

**Capitol Broadcasting  
Company, Inc.**

**Cherokee Investment  
Partners LLC**

**Credit Suisse**

**Duke Energy**

**First Citizens Bank**

**Greene Resources, Inc.**

**KB Home**

**Kimley-Horn & Associates, Inc.**

**Lenovo Group**

**Longistics**

**Quintiles Transnational Corp.**

**Rella:Cowan Advertising**

**RSM McGladrey, Inc./  
McGladrey & Pullen, LLP**

## 2007 Annual Report Sponsors

### Advocates



### Patrons

PB Americas, Inc.  
Stewart Engineering, Inc.

**Regional  
Transportation  
Alliance**

*Let's get moving! <sup>SM</sup>*

800 South Salisbury Street  
PO Box 2978  
Raleigh, NC 27602-2978

919.664.7062  
[www.letsgetmoving.org](http://www.letsgetmoving.org)